



Woodlands Drive, TW16

£1,300,000

Woodland House is an impressive four-bedroom detached home on one of Lower Sunbury's most desirable roads. Offering nearly 2,000 sq ft of versatile living space, it combines comfort, style, and future potential for extension.

Woodlands Drive is amazing location within Lower Sunbury with the River Thames close by. Houses rarely come up for sale on this exclusive road.

Features

- Detached
- Four Bedrooms
- Prime Location
- Study
- Utility Room
- Garage



Woodlands Drive, TW16

The ground floor of Woodland House exudes light and space, offering a wonderfully versatile layout. A striking dual-aspect reception room flows seamlessly through the home, complemented by a charming second reception room adorned with exposed beams, a dedicated study, a well appointed kitchen, a practical utility room, and a stylish W.C.

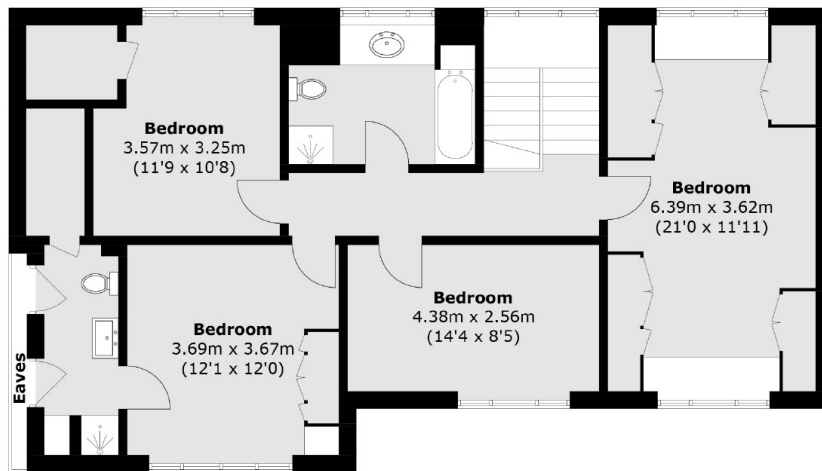
Upstairs, the generous master bedroom boasts extensive built in storage, while the second bedroom benefits from its own en suite shower room. Two further bedrooms and a beautifully finished family bathroom complete the first-floor accommodation, offering comfort and functionality for modern living.

The rear of the property reveals a stunning private garden an expansive lawn framed by mature greenery and a sun-soaked patio perfect for entertaining. At the front, a sweeping driveway provides secure off-street parking for at least six vehicles, enhanced by the convenience of a garage.

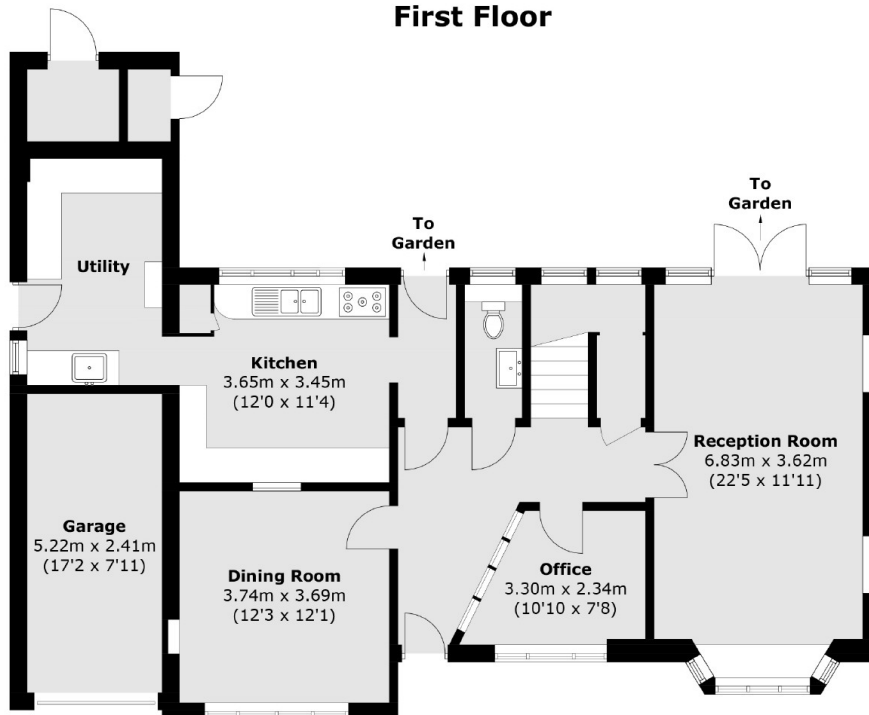
This is a rare opportunity to secure a home of such quality and potential in one of Lower Sunbury's most prestigious locations. Early viewing is highly recommended.



Woodlands Drive, Sunbury-On-Thames, TW16



First Floor



Ground Floor

Approx Internal Area: 184.6 sq. m (1,987.0 sq. ft)
(Excluding Eaves)
Garage / External Storage : 15.5 sq. m (166.8 sq. ft)