



Woodthorpe Road, TW15

£310,000

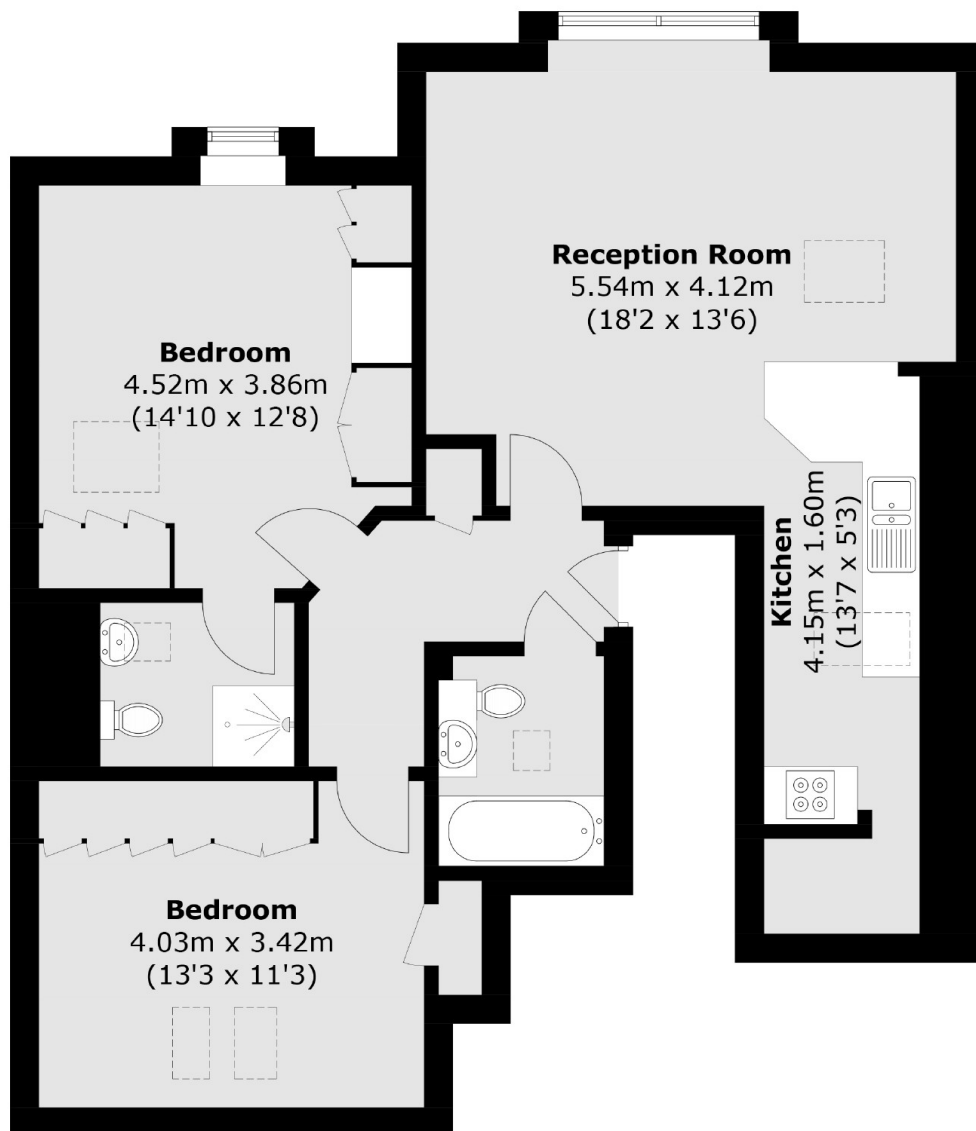
Discover modern living in this stylish two double bedroom, two bathroom flat that has been designed for comfort and convenience. This property comes with off-street parking and the added bonus of guest parking.

Woodthorpe Road is located just over half a mile from Ashford Station with easy access to the M3 Motorway, A316 and Heathrow Airport less than 5 miles away.

Features

- Two Double Bedrooms
- Two Bathrooms
- Lease Over 990 years
- Off-Street Parking
- Modern
- Top Floor

Woodthorpe Road, Ashford, TW15



Total area (approx.): 79.7 sq. m (857.9 sq. ft)

Dexters

Sunbury
22 Thames Street
Sunbury-On-Thames
TW16 6AF

Sales
01932 781100

Energy Rating: B. We aim to make our particulars both accurate and reliable. However they are not guaranteed; nor do they form part of an offer or contract. If you require clarification on any points then please contact us, especially if you're traveling some distance to view. Please note that appliances and heating systems have not been tested and therefore no warranties can be given as to their good working order.

 **RICS** | Regulated
Estate Agent
and Letting Agent

dexters.co.uk