



Feltham Road, TW15

£270,000

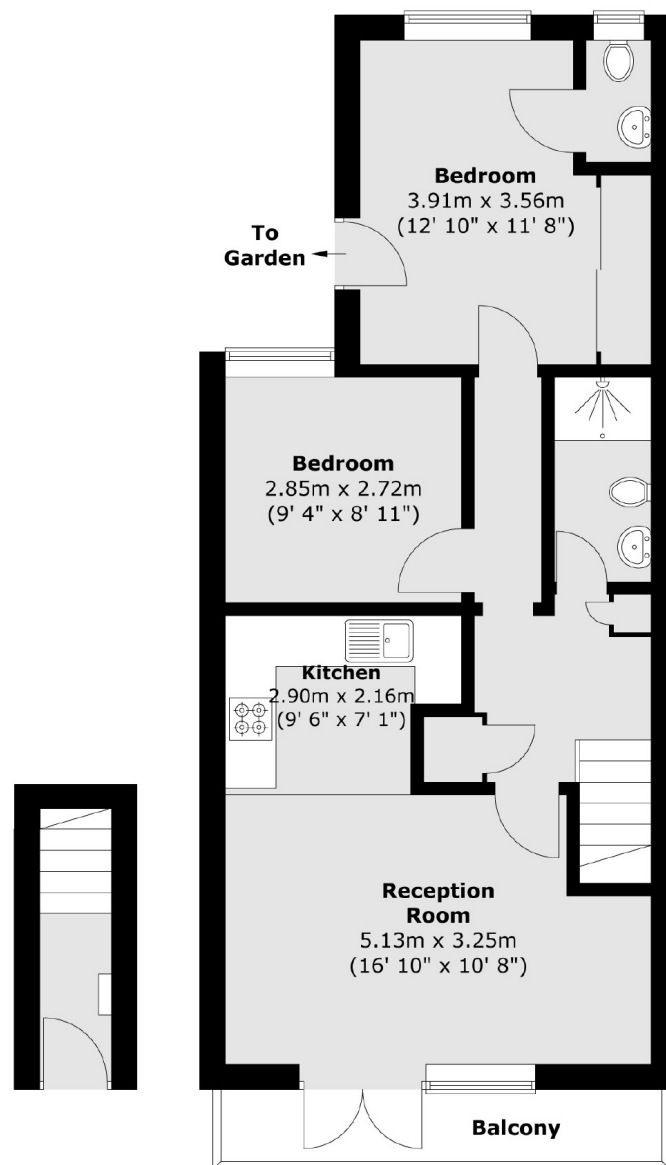
A well maintained and modernised two bedroom maisonette featuring a private garden and allocated parking, offering comfortable living. Early viewings are advised to avoid disappointment!

Feltham Road is a fantastic location in the heart of Ashford. With easy access to the M3 motorway and Ashford Station just over a mile away.

Features

- Maisonette
- Two Bedrooms
- Private Garden
- Allocated Parking
- Balcony
- Long Lease

Feltham Road, Ashford, TW15



Ground Floor

First Floor

Total area (approx.) : 59.9 sq. m (645 sq. ft)
Total balcony area (approx.) : 4.4 sq. m (47 sq. ft)

Dexters

Sunbury
22 Thames Street
Sunbury-On-Thames
TW16 6AF
Sales
01932 781100

Energy Rating: D. We aim to make our particulars both accurate and reliable. However they are not guaranteed; nor do they form part of an offer or contract. If you require clarification on any points then please contact us, especially if you're traveling some distance to view. Please note that appliances and heating systems have not been tested and therefore no warranties can be given as to their good working order.

 **RICS** | Regulated
Estate Agent
and Letting Agent

[dexters.co.uk](https://www.dexters.co.uk)