



## Windsor Road, TW16

### £725,000

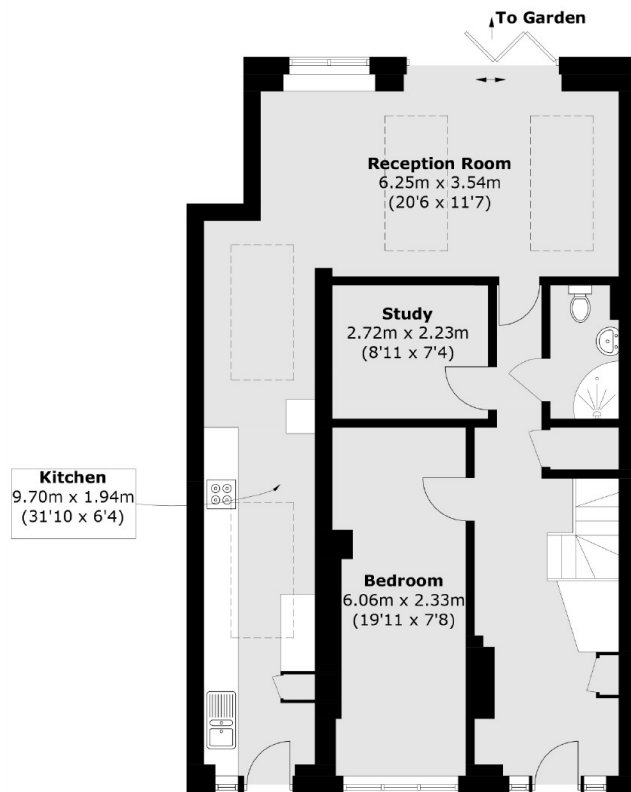
A stunning five/six bedroom end of terrace townhouse offering over 1,850 sq.ft of flexible accommodation spread over three floors with off-street parking for four cars and a landscaped rear garden. The property has recently been refurbished and is ready for the new owners to move straight in.

Windsor Road is a great location, this quiet residential road is located off Vicarage Road. Sunbury Station which provides a direct service into London Waterloo is approximately a quarter of a mile away.

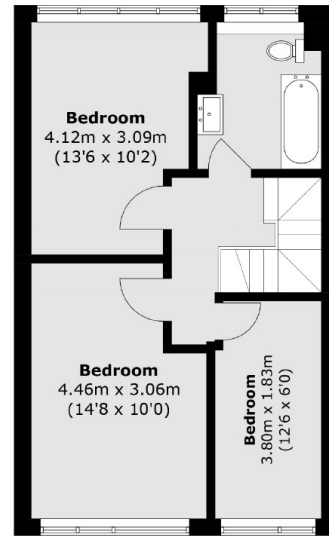
### Features

- End Of Terrace
- Townhouse
- Five/Six Bedrooms
- Three Bathrooms
- Off-Street Parking
- Smartly Presented

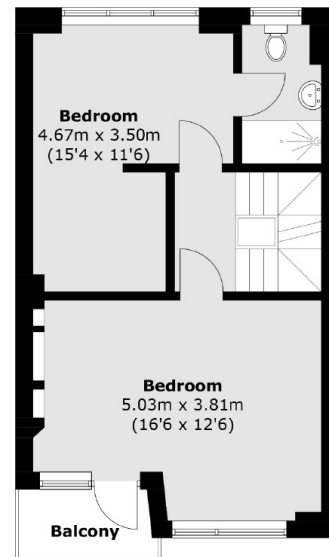
# Windsor Road, Sunbury-On-Thames, TW16



**Ground Floor**



**Second Floor**



**First Floor**

Total area (approx.): 172.6 sq. m (1857.9 sq. ft)  
Balcony area : 2.8 sq. m ( 30.1 sq. ft)

## Dexters

Sunbury  
22 Thames Street  
Sunbury-On-Thames  
TW16 6AF

Sales  
01932 781100

Energy Rating: TBC. We aim to make our particulars both accurate and reliable. However they are not guaranteed; nor do they form part of an offer or contract. If you require clarification on any points then please contact us, especially if you're traveling some distance to view. Please note that appliances and heating systems have not been tested and therefore no warranties can be given as to their good working order.

 **RICS** | Regulated  
Estate Agent  
and Letting Agent

[dexters.co.uk](http://dexters.co.uk)