



Ravendale Road, TW16

£795,000

A stunning five bedroom semi-detached house located on a corner plot offering amazing entertaining space, with a private garden and off-street parking. This beautiful family home is perfect for an upsizing family and ready for you to move straight into.

Ravendale Road is a great location off Nursery Road and Stratton Road with Cedars Recreation Ground just around the corner. The River Thames, riverside pubs, local schools and Upper Halliford station which provides a direct service to Waterloo are all close by.

Features

- Semi-Detached
- Five Bedrooms
- Two Bathrooms
- Utility Room
- Amazing Kitchen
- Off-Street Parking



Ravendale Road, TW16

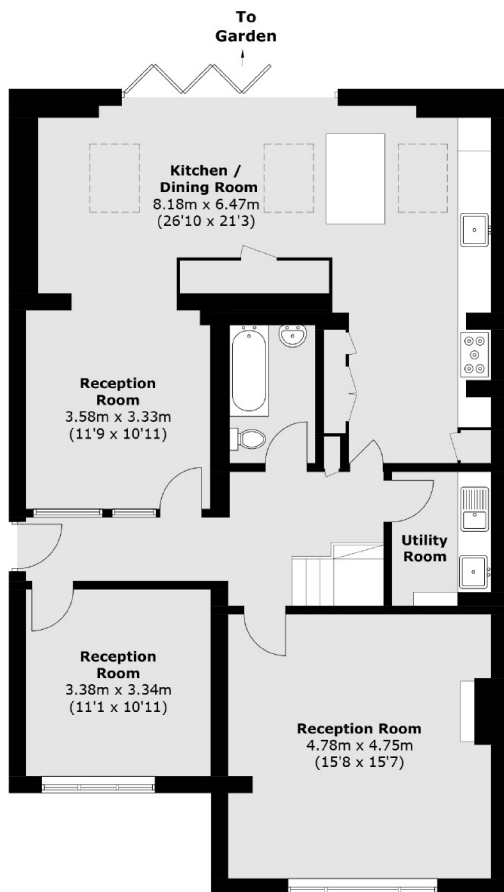
On the ground floor there is a welcoming entrance hallway, a large front reception room with a feature fireplace, a second reception room and an incredible kitchen, dining and family room with is ideal for spending time with family and friends. There is also the added bonus of a utility room and a second bathroom.

On the first floor there is a master bedroom with an en suite shower room and four further bedrooms, one of which is currently used as a home office.

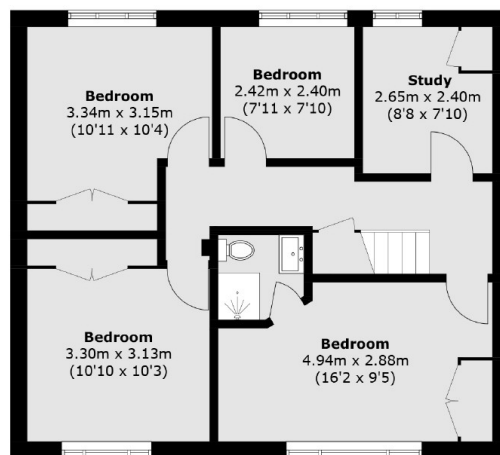
To the front of the property there is a wrap around garden. To the rear there is a landscaped garden with a large patio area, a lawn and an outbuilding. There is also off-street parking.



Ravendale Road, Sunbury-On-Thames, TW16



Ground Floor



First Floor

Total area (approx.): 173.6 sq. m (1,868.6 sq. ft)