



Kempton Court, TW16

£335,000

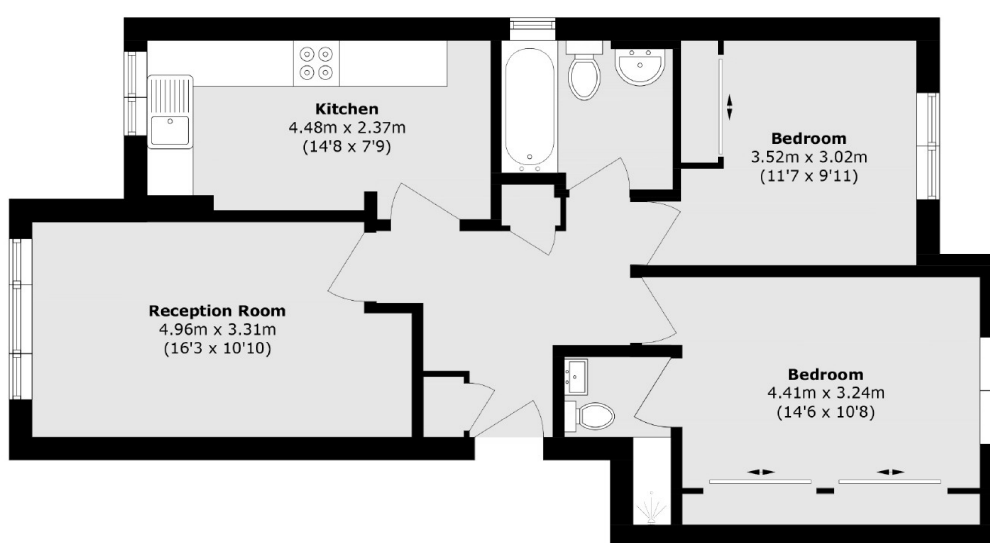
A two bedroom, two bathroom first floor apartment with allocated parking. This light and spacious property would be perfect for a first time buyer or for someone looking to downsize. There is also the added bonus of no forward chain.

Kempton Court is in a great location with both Kempton Park and Sunbury Stations which provide a direct service to London Waterloo are less than half a mile away. The River Thames, Sunbury Park and local village shops are also close by.

Features

- First Floor Apartment
- Two Bedrooms
- Two Bathrooms
- Allocated Parking
- Communal Gardens
- No Forward Chain

Kempton Court, Sunbury-On-Thames, TW16



Total area (approx.): 63.2 sq. m (680.2 sq. ft)

Dexters

Sunbury
22 Thames Street
Sunbury-On-Thames
TW16 6AF
Sales
01932 781100

Energy Rating: C. We aim to make our particulars both accurate and reliable. However they are not guaranteed; nor do they form part of an offer or contract. If you require clarification on any points then please contact us, especially if you're traveling some distance to view. Please note that appliances and heating systems have not been tested and therefore no warranties can be given as to their good working order.

 **RICS** | Regulated
Estate Agent
and Letting Agent

[dexters.co.uk](https://www.dexters.co.uk)