



Staines Road East, TW16

£330,000

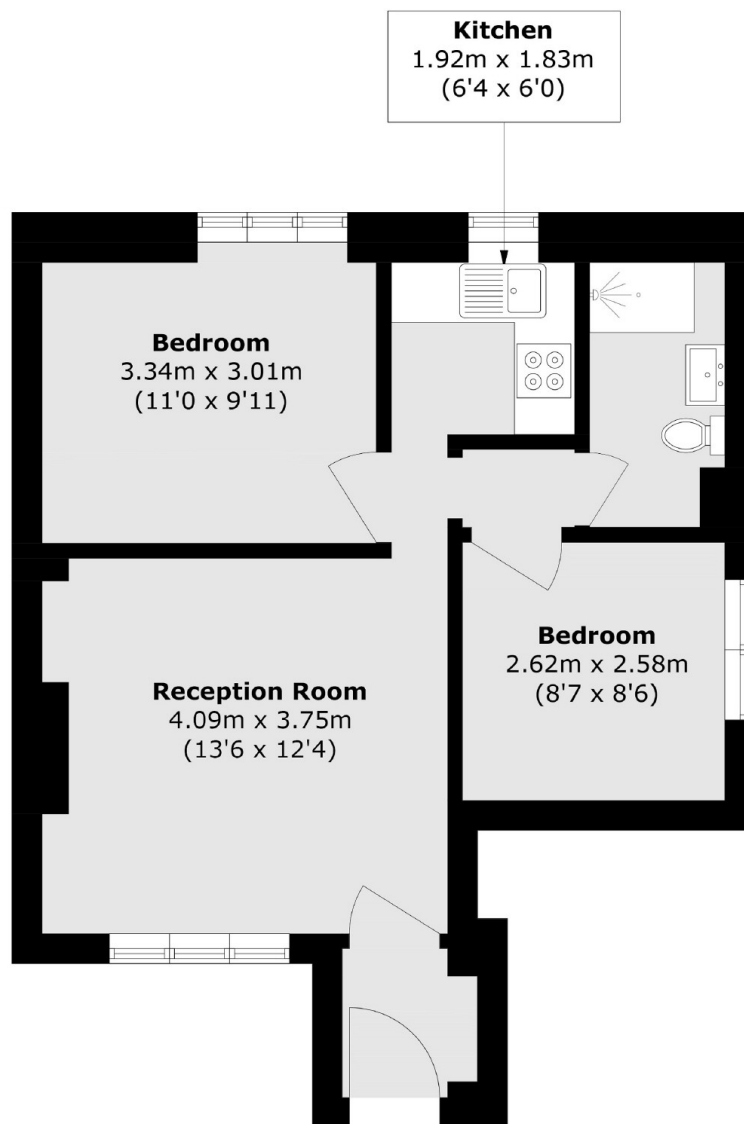
A smartly presented two bedroom ground floor maisonette with off-street parking and a wraparound garden. This property has planning permission granted for an extension to the side which would substantially increase the living space, there is also the additional bonus of no forward chain.

The location is great, tucked away just off of the Staines Road East. Sunbury Station is close by and provides a direct service in London Waterloo.

Features

- Ground Floor Maisonette
- Two Bedrooms
- Planning Permission to Extend
- Private Garden
- Off- Street Parking
- No Forward Chain

Staines Road East, Sunbury-On-Thames, TW16



Total area (approx.): 45.4 sq. m (488.6 sq. ft)