



## Willow Way, TW16

### £725,000

A charming three bedroom semi-detached chalet bungalow with off-street parking and a large private garden with an outbuilding. This has the added bonus of two bathrooms spread over two floors and is situated on a lovely private road that backs onto a park.

Willow Way is an amazing location, this private no through road is located off Fordbridge Road right next to a park. The village shops, riverside pubs and the 'Walled Garden' are also close by.

### Features

- Three Bedrooms
- Off-Street Parking
- Private Road
- Conservatory
- Large Private Garden
- Outbuilding





## Willow Way, TW16

On the ground floor there is a front reception room with doors that open up into the garden, a kitchen which leads into a cosy conservatory and doors that again open up into the garden, a family bathroom and two generous double bedrooms.

On the first floor there is a master bedroom with an en suite bathroom and views of the park. To the rear of the property there is an amazing garden and an outbuilding with electrics and heating built in- ideal for anyone looking for a summer house or a gym or even an office space.

To the front of the property there is a driveway for multiple cars and side access straight into the garden. This is a property that needs to be seen to be fully appreciated.





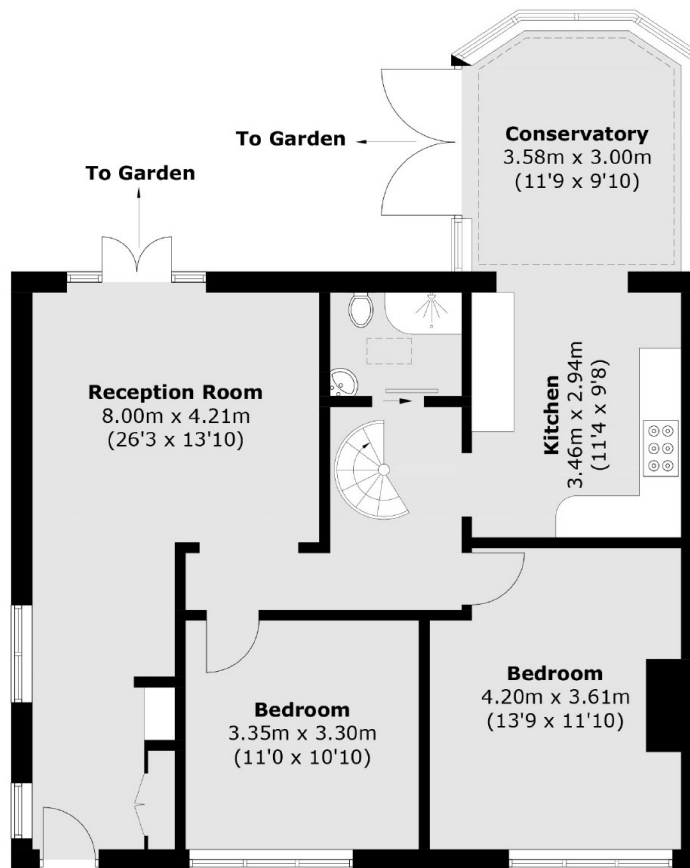


# Willow Way, Sunbury-On-Thames, TW16



(Not Shown In Actual  
Location / Orientation)

## First Floor



## Ground Floor

Total area (approx.): 110.4 sq. m (1,188.4 sq. ft)  
Outhouse: 14.4 sq. m (155.0 sq. ft)