



Oakington Drive, TW16

£700,000

A beautifully extended and loft-converted 1930's four bedroom semi-detached home, offering generous living space and stylish design perfect for modern family living and hosting friends and family.

Oakington Drive is an excellent location close to the borders of Lower Sunbury and Hampton. The River Thames, riverside pubs, local village shops and parks are all close by.

Features

Semi-Detached
Four Bedrooms
Loft Converted
Rear Extended
Large Garden
Driveway



Oakington Drive, TW16

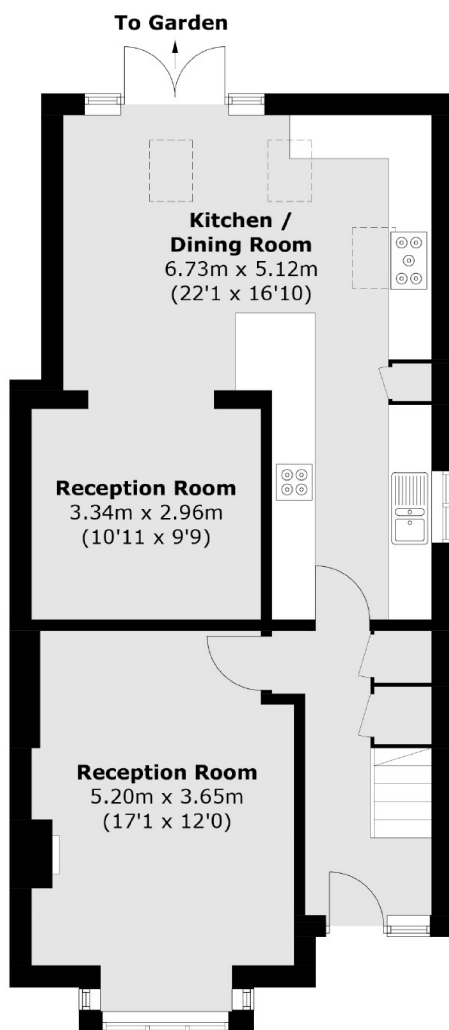
Step into this beautifully presented family home and discover a warm, inviting snug reception complete with a charming log burner perfect for cosy winter evenings. A second reception room flows into a spacious family breakfast room, opening directly onto a large, private garden that's barely overlooked ideal for both everyday living and entertaining.

Upstairs, three well sized bedrooms that offer comfortable spaces for children or guests, complemented by a modern family bathroom. The top floor features a stunning loft converted master bedroom with en suite bathroom and far-reaching views of the surrounding area. Further benefits include a generous driveway with space for two cars.

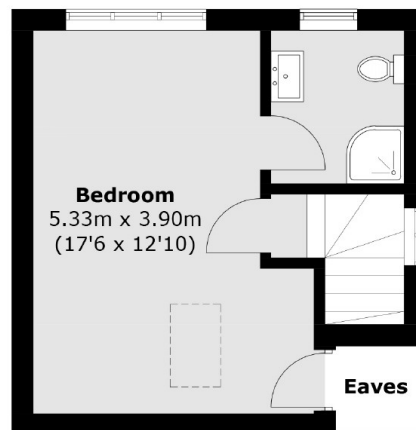
This thoughtfully extended home combines character, space, and style perfect for modern family life. Early viewings are highly recommended.



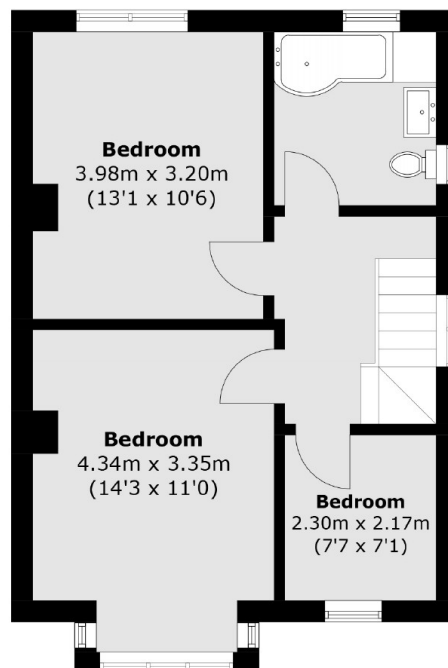
Oakington Drive, Sunbury-On-Thames, TW16



Ground Floor



Second Floor



First Floor

Total area (approx.): 135.8 sq. m (1462.7 sq. ft)
(Excluding Eaves)