



## Orchard Road, TW16

### £500,000

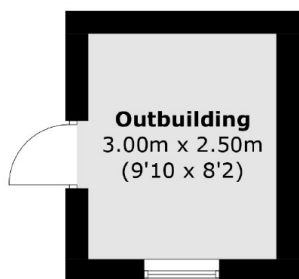
A smartly presented four bedroom property located on a quiet cul-de-sac with a private rear garden. Spread over three floors this property offers spacious bedrooms and is an ideal family home.

Orchard Road is located on a cul-de-sac near the Kempton Race Course. It is in walking distance to Kempton Park Station which gives direct links to London Waterloo and quick links onto the M3 and A316.

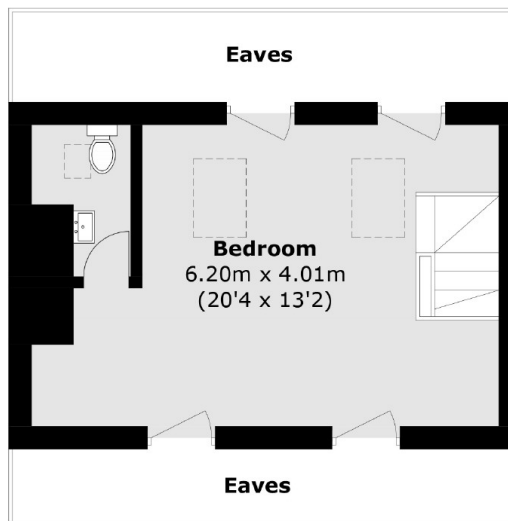
### Features

- Mid-Terrace
- Four Bedrooms
- Private Rear Garden
- Cul-de-sac
- Modern Finish
- Outbuilding

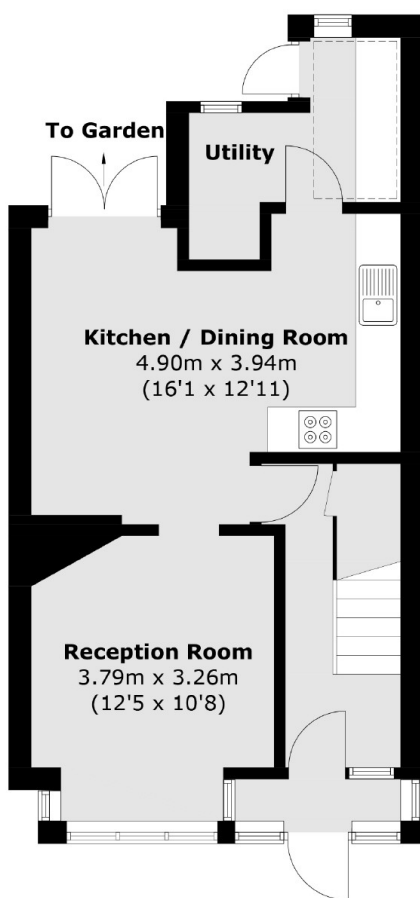
# Orchard Road, Sunbury-On-Thames, TW16



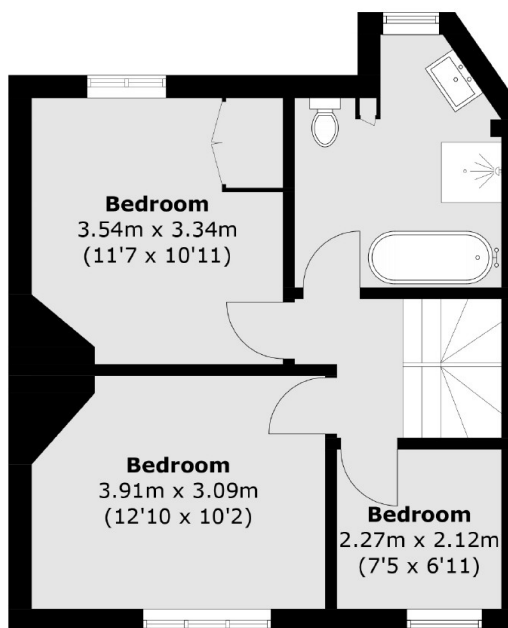
(Not Shown In Actual  
Location / Orientation)



## Second Floor



## Ground Floor



## First Floor

Total area (approx.): 113.0 sq. m (1,216.3 sq. ft)  
Outbuilding : 7.6 sq. m (81.8 sq. ft)  
(Excluding Eaves)

# Dexters

Sunbury  
22 Thames Street  
Sunbury-On-Thames  
TW16 6AF  
Sales  
01932 781100

Energy Rating: D. We aim to make our particulars both accurate and reliable. However they are not guaranteed; nor do they form part of an offer or contract. If you require clarification on any points then please contact us, especially if you're traveling some distance to view. Please note that appliances and heating systems have not been tested and therefore no warranties can be given as to their good working order.

**RICS** Regulated  
Estate Agent  
and Letting Agent

dexters.co.uk