



Fairlawns, TW16

£525,000

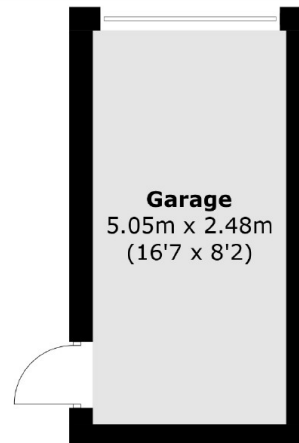
A charming three bedroom family home with a private garden and a garage. The property is smartly presented throughout and would be perfect as a first home or for someone looking to downsize.

Fairlawns is a great location for families, this quiet cul-de-sac is located within Lower Sunbury village. Sunbury station, Sunbury Park, the local shops and the River Thames are all within half a mile.

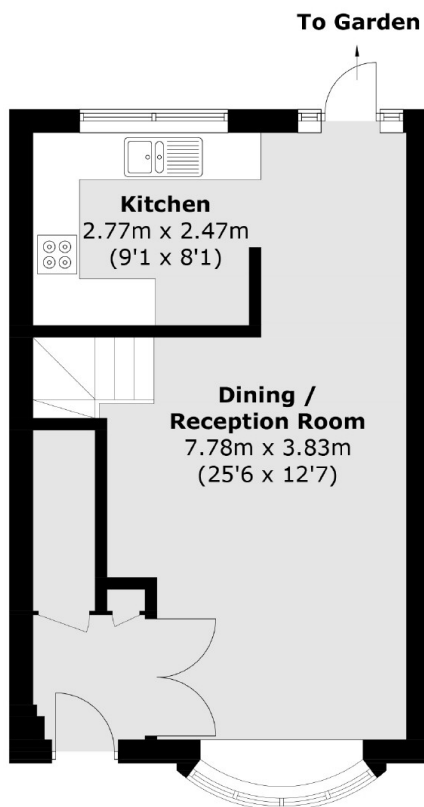
Features

- Mid-Terrace
- Three Bedrooms
- Smartly Presented
- Garage
- Private Garden
- Cul-De-Sac

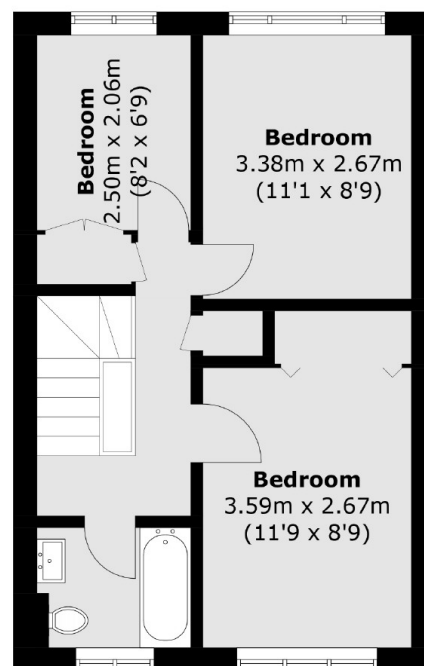
Fairlawns, Sunbury-On-Thames, TW16



(Not Shown In Actual
Location / Orientation)



Ground Floor



First Floor

Total area (approx.): 75.0 sq. m (807.2 sq. ft)
Garage (approx.): 12.5 sq. m (134.5 sq. ft)