



## Lime Crescent, TW16

### £399,950

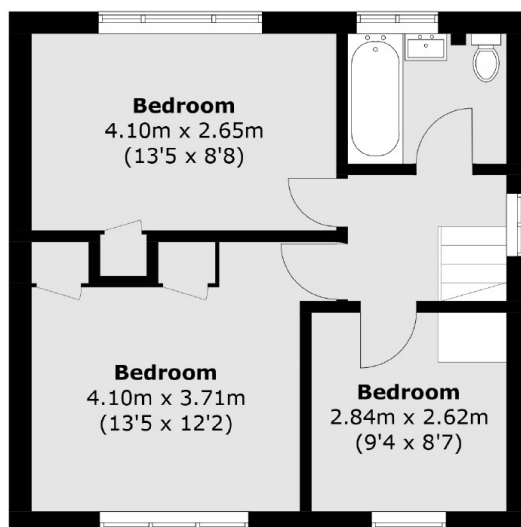
This three-bedroom semi-detached home, built via steel frame construction, sits on a generous plot. Early viewings are essential to fully appreciate the potential and avoid missing out on this fantastic opportunity!

Lime Crescent is a quiet cul-de-sac with everything Lower Sunbury has to offer close by including the River Thames, riverside pubs and parks.

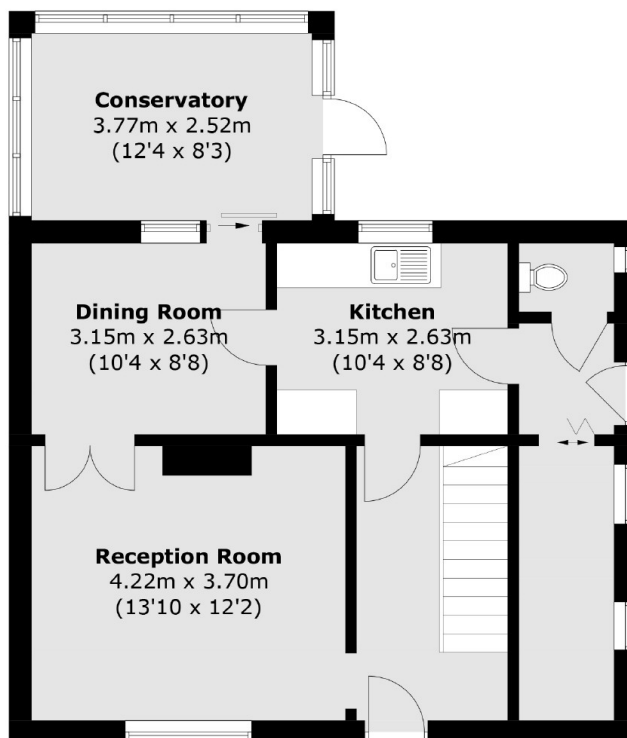
### Features

- Semi-Detached House
- Three Bedrooms
- Two Reception Rooms
- Large Garden
- Steel Frame
- Chain Free

# Lime Crescent, Sunbury-On-Thames, TW16



**First Floor**



**Ground Floor**

Total area (approx.): 102.4 sq. m (1,102.2 sq. ft)