



## Elizabeth Gardens, TW16

£750,000

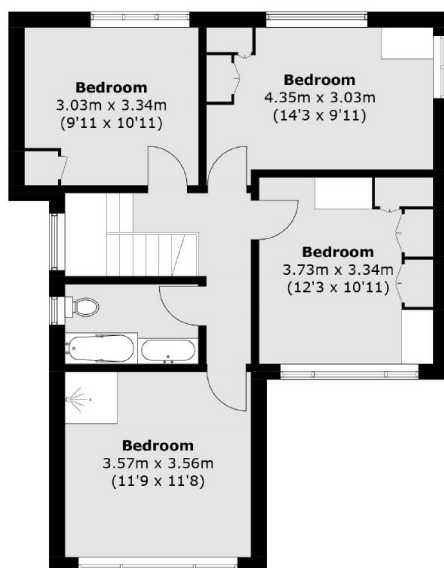
This four bedroom detached 1960's family home, is located on a corner plot of land near the heart of Sunbury Village. The house is spread over two floors and offers flexible living accommodation with lots of potential.

Elizabeth Gardens is the ideal location in the heart of Sunbury Village, Rivermead Island, the River Thames, riverside pubs and local shops are all close by.

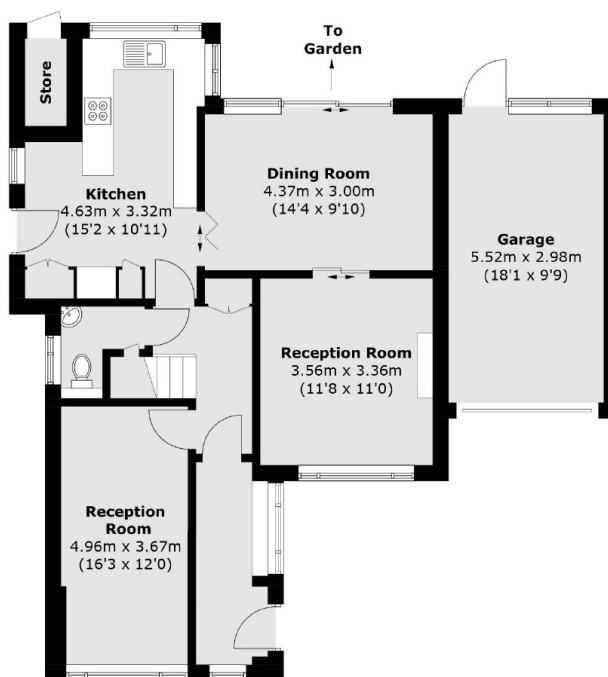
### Features

- Detached
- Four Bedrooms
- Prime Location
- No Chain
- Garage
- Driveway

# Elizabeth Gardens, Sunbury-On-Thames, TW16



**First Floor**



**Ground Floor**

Approx Internal Area: 130.3 sq. m (1,402.5 sq. ft)

Garage: 16.6 sq. m (178.7 sq. ft)

External Store: 1.3 sq. m (14.0 sq. ft)

Total: 148.2 sq. m (1,595.2 sq. ft)

## Dexters

Sunbury  
22 Thames Street  
Sunbury-On-Thames  
TW16 6AF

Sales  
01932 781100

Energy Rating: D. We aim to make our particulars both accurate and reliable. However they are not guaranteed; nor do they form part of an offer or contract. If you require clarification on any points then please contact us, especially if you're traveling some distance to view. Please note that appliances and heating systems have not been tested and therefore no warranties can be given as to their good working order.

 **RICS** | Regulated  
Estate Agent  
and Letting Agent

[dexters.co.uk](https://www.dexters.co.uk)