



Littleton Road, TW15

£299,950

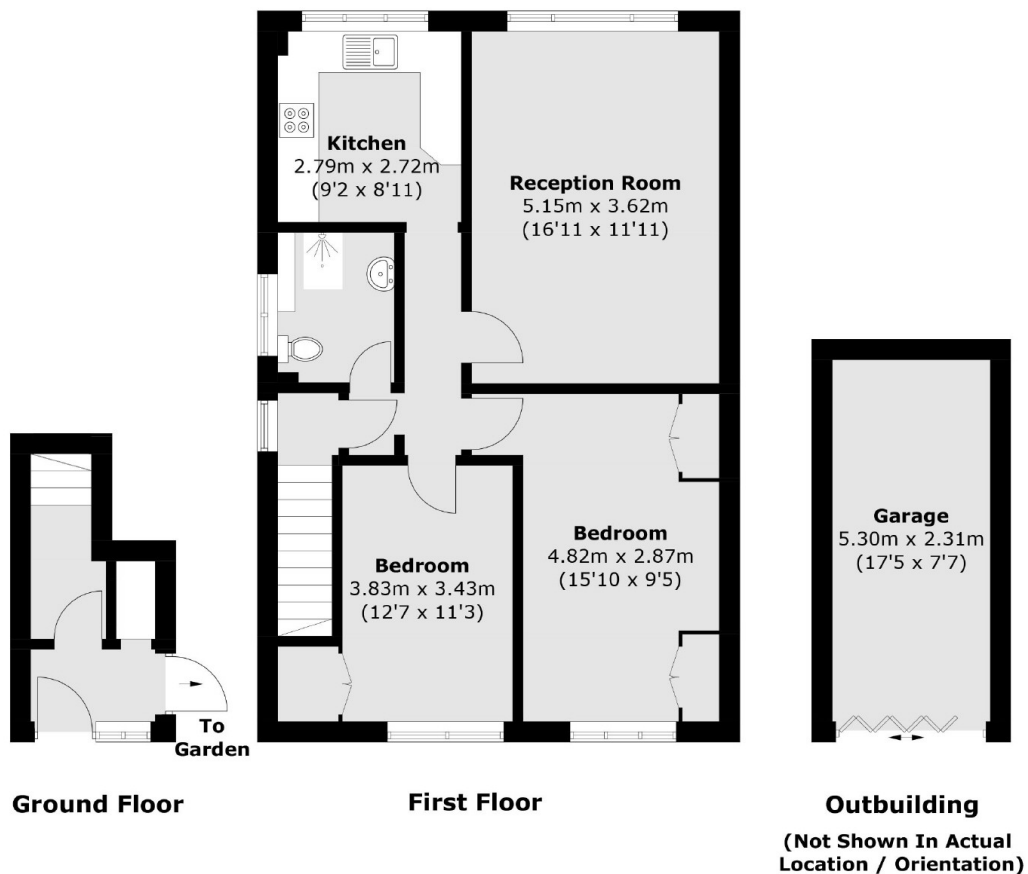
A two bedroom first floor maisonette with a private garden, off-street parking and a garage. The property has a light a spacious feel and is being sold with the added bonus of no forward chain.

Littleton Road is located on the borders of Ashford, Shepperton and Sunbury On Thames. Sunbury station is approximately one mile away and provides a direct service into London Waterloo.

Features

First Floor
Two Bedrooms
Garage
Garden
Off-Street Parking
No Forward Chain

Littleton Road, Ashford, TW15



Total area (approx.): 71.2 sq. m (766.3 sq. ft)
Garage: 12.5 sq. m (134.5 sq. ft)

Dexters

Sunbury
22 Thames Street
Sunbury-On-Thames
TW16 6AF
Sales
01932 781100

Energy Rating: D. We aim to make our particulars both accurate and reliable. However they are not guaranteed; nor do they form part of an offer or contract. If you require clarification on any points then please contact us, especially if you're traveling some distance to view. Please note that appliances and heating systems have not been tested and therefore no warranties can be given as to their good working order.

 **RICS** | Regulated
Estate Agent
and Letting Agent

dexters.co.uk