



Furzewood, TW16

£725,000

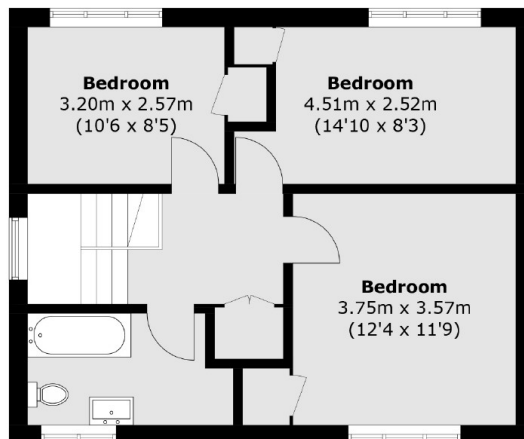
A detached three bedroom house with off street parking, a garage and a large rear garden. This lovely home is filled with potential and is perfect for a family looking for a house that they can put their own stamp on. There is the added bonus of no forward chain.

What a location! Tucked away in the highly sought after Benwell Meadow Estate with Sunbury Station just around the corner. The River Thames, riverside pubs and Sunbury Park are all within a mile. Good and Outstanding OFSTED schools are also nearby.

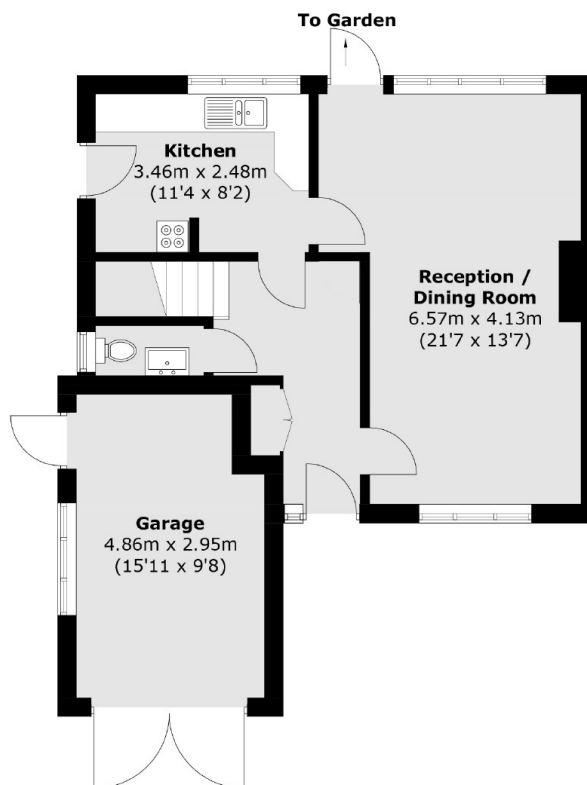
Features

- Detached
- Three Bedrooms
- Large Garden
- Garage
- No Forward Chain
- Potential to Extend (STPP)

Furzewood, Sunbury-On-Thames, TW16



First Floor



Ground Floor

Approx Internal Area: 95.7 sq. m (1030 sq. ft)
Garage: 14.5 sq. m (156.1 sq. ft)
Total: 110.2 sq. m (1186.1 sq. ft)