



Bowater Gardens, TW16

£550,000

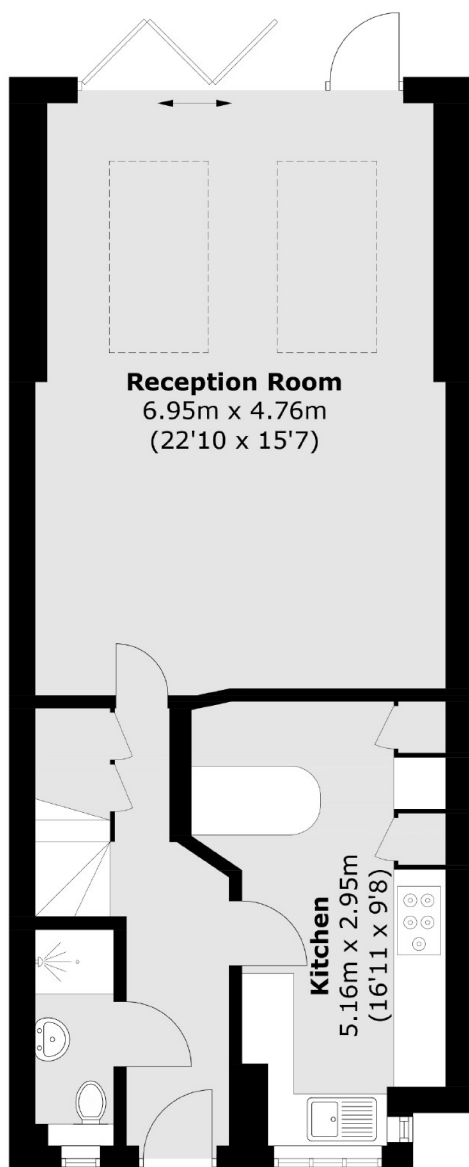
A three bedroom family home, beautifully styled by the current owners for a modern contemporary feel. This property is ready to move in straightway and is not to be missed.

Bowater Gardens is a modern development off French Street. The local shops, the River Thames, Sunbury Park and Kempton Park Station are all close by.

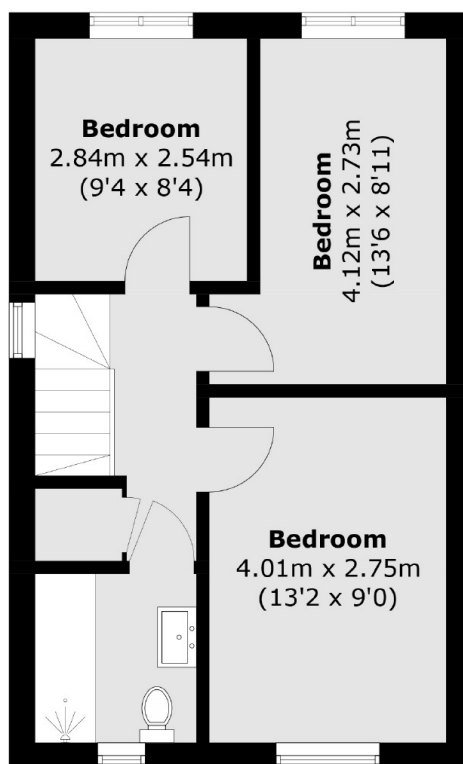
Features

- Modern Property
- End of Terrace
- Rear Extended
- Three Bedrooms
- Two Parking Spaces
- Private Garden

Bowater Gardens, Sunbury-On-Thames, TW16



Ground Floor



First Floor

Total area (approx.): 96.0 sq. m (1,033.3 sq. ft)