



Kingswood Close, TW15

£550,000

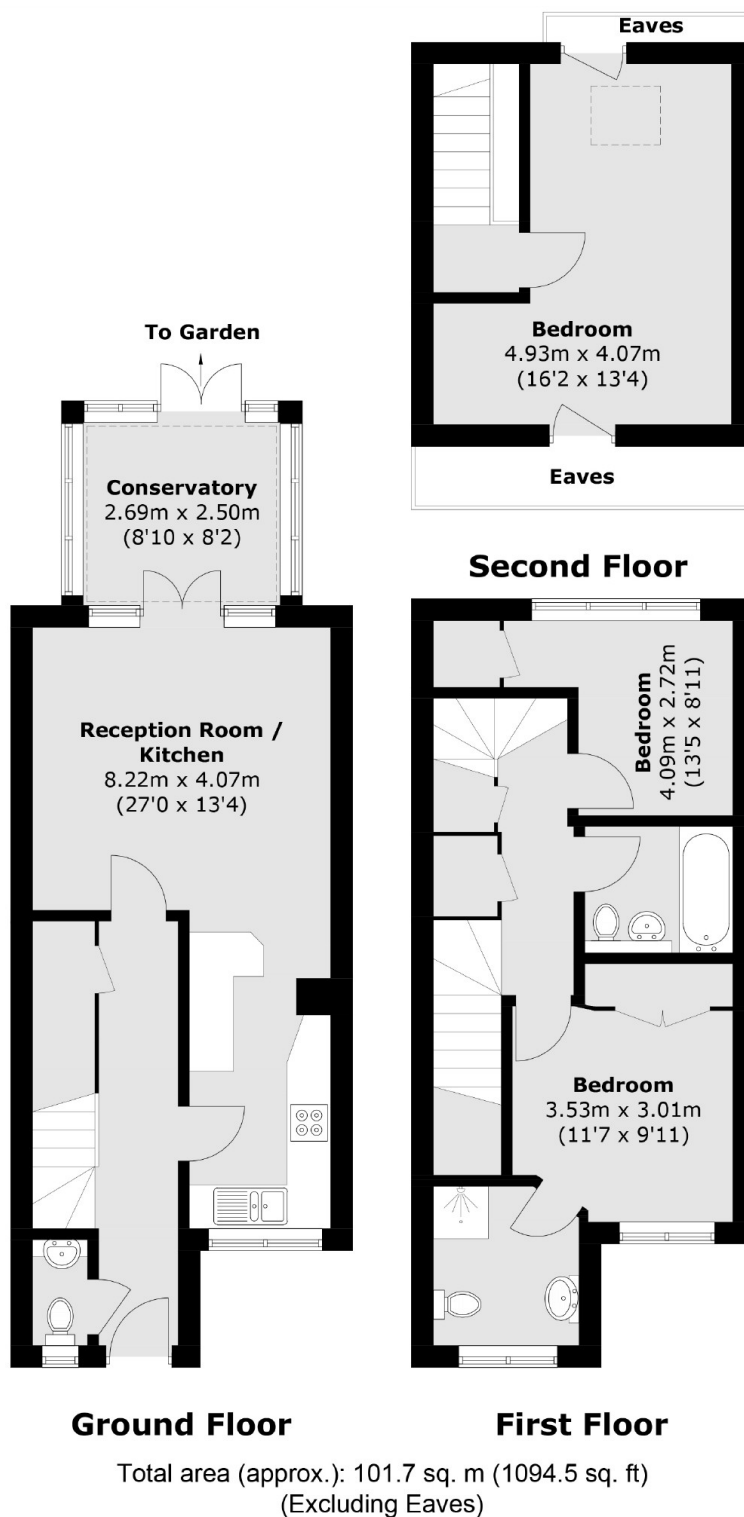
A beautifully presented three bedroom house set over three floors, this amazing family home is in great condition and ready to move in. Early viewings are recommended to avoid disappointment

Kingswood Close is tucked away in a quiet cul-de-sac just off of Wrens Avenue in Ashford . With easy access to the M3 motorway and Ashford station just over a mile away.

Features

- Modern House
- Three Storey
- Three Bedrooms
- Two Bathrooms
- Conservatory
- Allocated Parking

Kingswood Close, Ashford, TW15



Dexters

Sunbury
22 Thames Street
Sunbury-On-Thames
TW16 6AF
Sales
01932 781100

Energy Rating: C. We aim to make our particulars both accurate and reliable. However they are not guaranteed; nor do they form part of an offer or contract. If you require clarification on any points then please contact us, especially if you're traveling some distance to view. Please note that appliances and heating systems have not been tested and therefore no warranties can be given as to their good working order.

RICS | Regulated
Estate Agent
and Letting Agent

dexters.co.uk