



## The Rowans, TW16

### £460,000

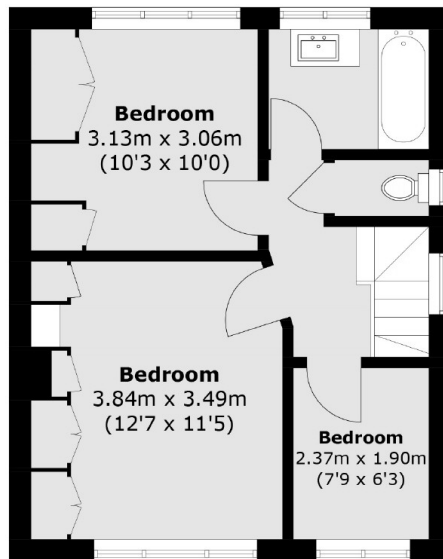
A three bedroom semi-detached house with a garage, off-street parking and a private rear garden. This property would make a perfect first family home.

The Rowans is a great location, this quiet cul de sac is located off Vicarage Road. Sunbury Station which provides a direct service into Waterloo is just over half a mile away. There is also easy access to the A316 and M3.

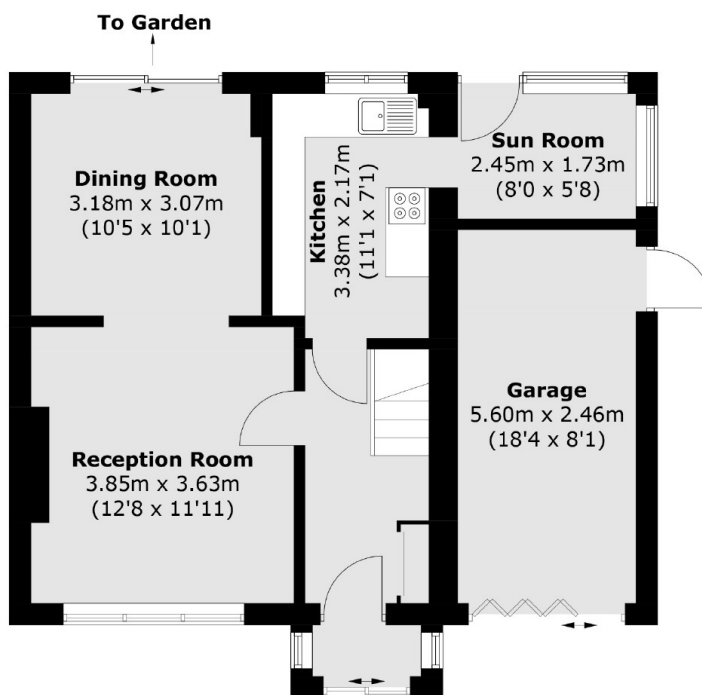
### Features

- Semi-Detached
- Three Bedrooms
- Two Reception Rooms
- Off-Street Parking
- Garage
- Cul-De-Sac

# The Rowans, Sunbury-On-Thames, TW16



**First Floor**



**Ground Floor**

Approx Internal Area: 84.4 sq. m (908.5 sq. ft)  
Garage: 13.1 sq. m (141.0 sq. ft)  
Total: 97.5 sq. m (1,049.5 sq. ft)