



Dyas Road, TW16

£484,950

A rare opportunity to purchase one of the larger two bedroom apartments in this development with its own front door. There are two bathrooms, a private terrace and allocated parking.

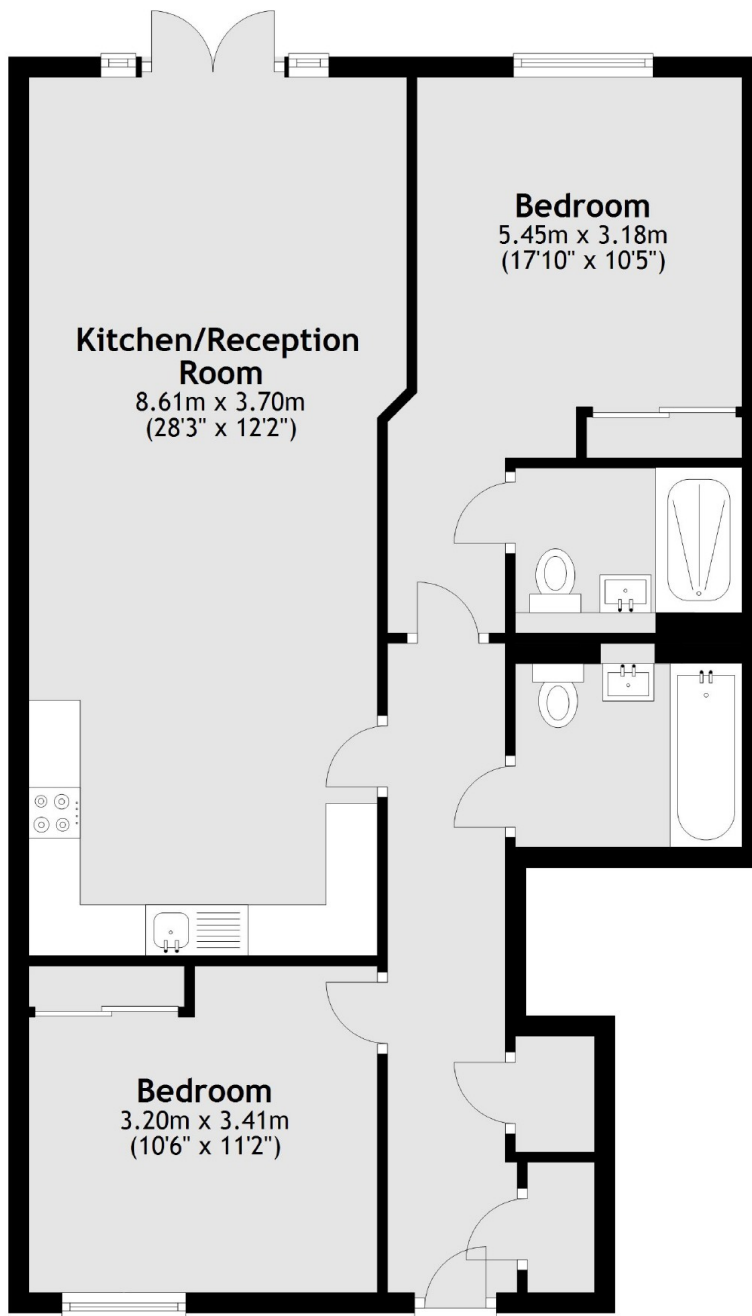
Dyas Road is a modern development located in the heart of Lower Sunbury. Sunbury Station, Sunbury Park and the River Thames, and several local schools are all within half a mile, with Nuffield Health Club right on your doorstep.

Features

Modern Apartment
Two Bedrooms
Two Bathrooms
Private Terrace
Allocated Parking
No Onward Chain

Dyas Road, Sunbury-On-Thames, TW16

Ground Floor



Total area: approx. 75.1 sq. metres (808.8 sq. feet)

Dexters

Sunbury
22 Thames Street
Sunbury-On-Thames
TW16 6AF
Sales
01932 781100

Energy Rating: B. We aim to make our particulars both accurate and reliable. However they are not guaranteed; nor do they form part of an offer or contract. If you require clarification on any points then please contact us, especially if you're traveling some distance to view. Please note that appliances and heating systems have not been tested and therefore no warranties can be given as to their good working order.

 **RICS** | Regulated
Estate Agent
and Letting Agent

[dexters.co.uk](https://www.dexters.co.uk)