



Dunnell Close, TW16

£355,000

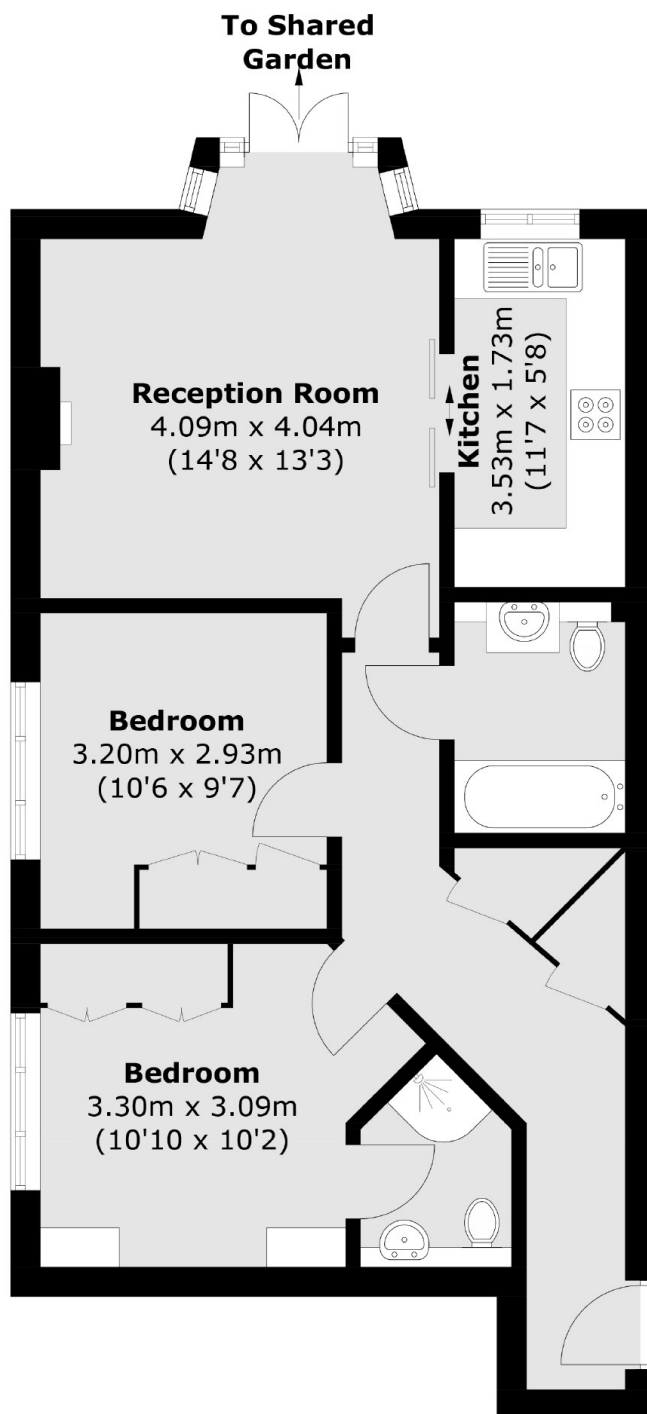
A ground floor, two bedroom, two bathroom flat with allocated parking. This modern apartment was built in 2008 and is being sold with no forward chain.

Located off Green Street, Dunnell Close is a private gated development. The apartment is in a great location and provides easy access to Sunbury station, the local parks and the River Thames.

Features

- Gated Development
- Ground Floor
- Two Bedrooms
- Two Bathrooms
- Allocated Parking
- Communal Gardens

Dunnell Close, Sunbury-On-Thames, TW16



Total area (approx.): 64.5 sq. m (694.2 sq. ft)

Dexters

Sunbury
22 Thames Street
Sunbury-On-Thames
TW16 6AF

Sales
01932 781100

Energy Rating: B. We aim to make our particulars both accurate and reliable. However they are not guaranteed; nor do they form part of an offer or contract. If you require clarification on any points then please contact us, especially if you're traveling some distance to view. Please note that appliances and heating systems have not been tested and therefore no warranties can be given as to their good working order.

 **RICS** | Regulated
Estate Agent
and Letting Agent

[dexters.co.uk](https://www.dexters.co.uk)