



Roper Crescent, TW16

£1,500,000

A stunning six bedroom modern house with off-street parking and a garage. The property was built by Crest Nicholson in 2017 and has been enhanced and extended by the current owners to create a beautiful family home offering over 2,700 sq.ft of accommodation spread over three floors.

Roper Crescent is located just off of the Avenue in Lower Sunbury. Sunbury Park, the 'Walled Garden', the local village shops and the River Thames are all close by. Sunbury station is under half a mile away and provides a direct service into London Waterloo.

Features

- Detached
- Six Bedrooms
- Four Bathrooms
- Utility Room
- Garage
- Off-Street Parking



Roper Crescent, TW16

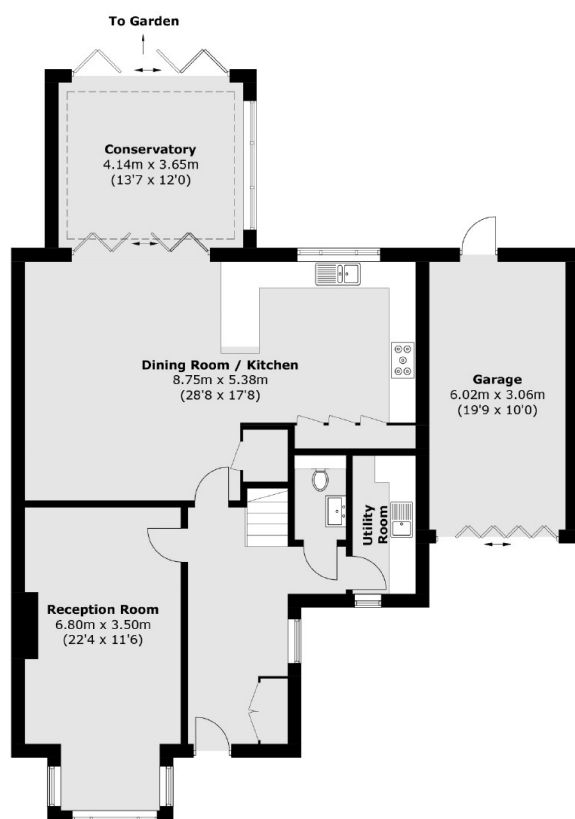
This wonderful home provides families with a flexible layout. On the ground floor there is a large front reception room with a feature fireplace and a spacious open plan kitchen living space which leads to the conservatory. The ground floor has the added bonus of a utility room and a WC.

On the first floor there is a generous master bedroom with a balcony, dressing area and an en suite bathroom. There are two additional double bedrooms, a family bathroom and a study/nursery. On the top floor there are two further double bedrooms and two bathrooms.

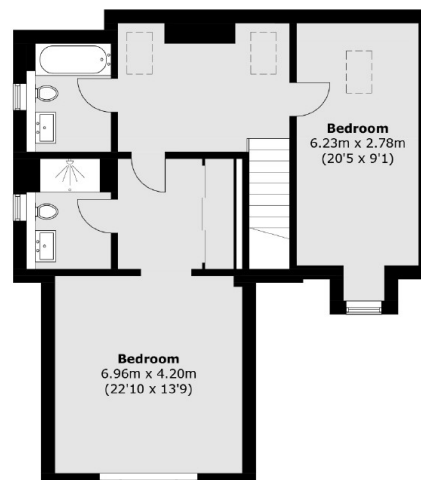
To the rear of the property there is a landscaped garden with an extended patio which is perfect for entertaining friends and family. To the front there is off street parking for two cars and access to the garage.



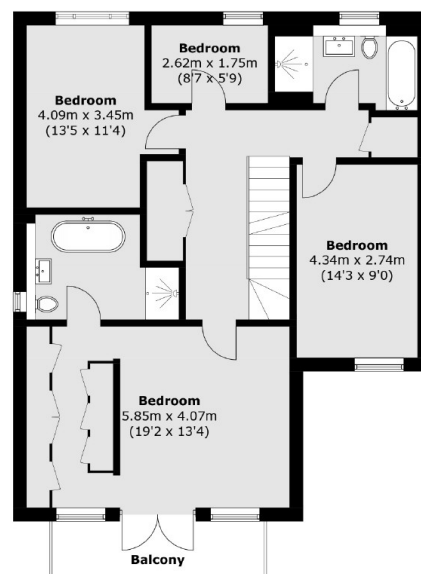
Roper Crescent, Sunbury-On-Thames, TW16



Ground Floor



Second Floor



First Floor

Approx Internal Area: 258.1 sq. m (2,778.1 sq. ft)
 Garage: 19.0 sq. m (204.5 sq. ft)
 Total: 277.1 sq. m (2,982.6 sq. ft)
 Balcony area : 6.0 sq. m (64.6 sq. ft)