



Martingale Close, TW16

£499,950

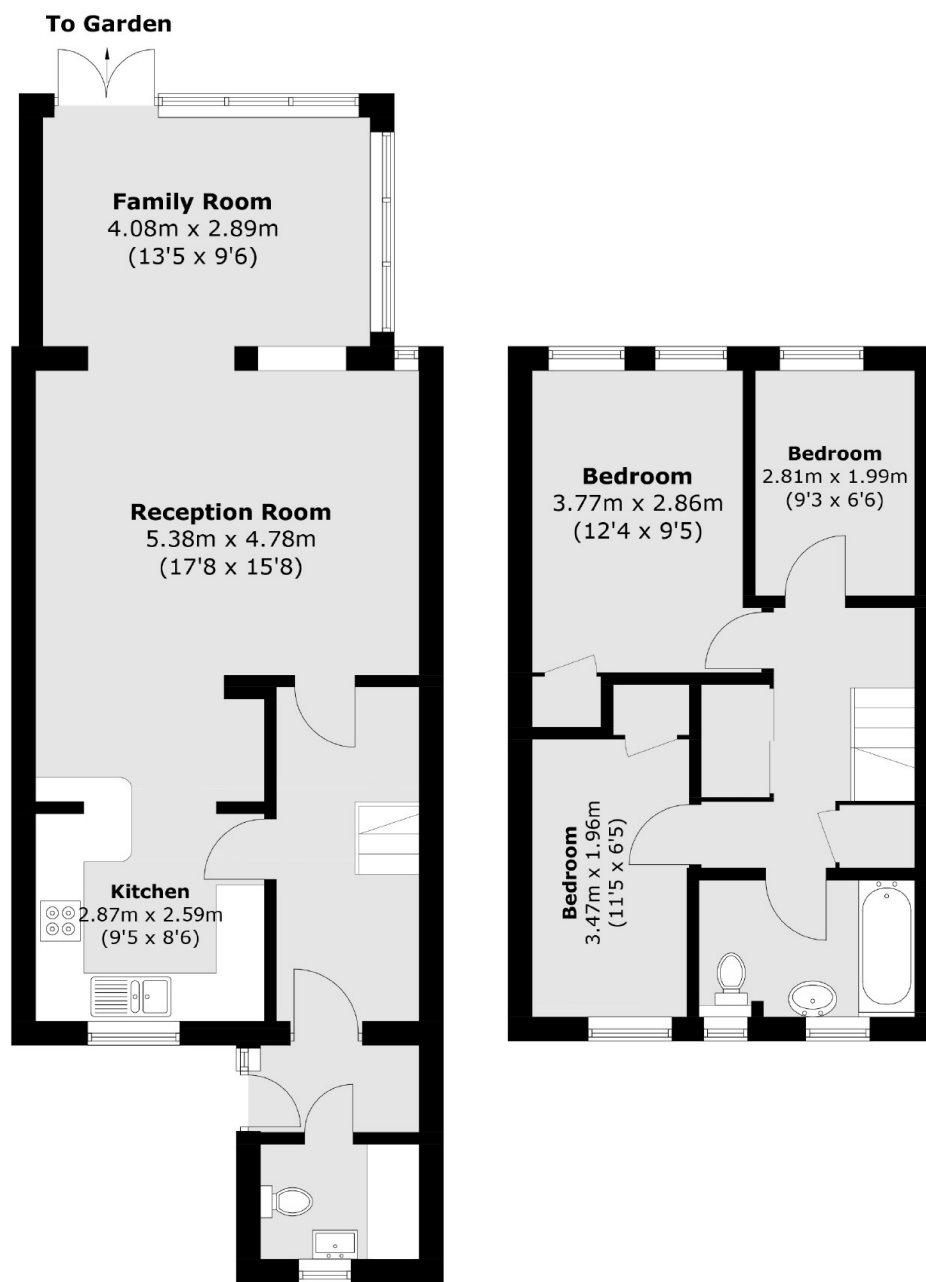
This smartly presented three bedroom mid-terrace property would make the perfect first family home. The house has been beautifully renovated and offers flexible ground floor space. There are the added bonuses of a downstairs W.C, and a private garden.

Martingale Close is a quiet residential cul-de-sac, perfect for young families with a children's play area within the close. The local Village shops, Sunbury Park, the popular 'Walled Garden' and the River Thames are all close by.

Features

- Cul-De-Sac
- Three Bedrooms
- Downstairs W.C.
- Rear Extended
- Freehold
- Private Garden

Martingale Close, Sunbury-On-Thames, TW16



Ground Floor

First Floor

Total area (approx.): 96.4 sq. m (1,037.6 sq. ft)