



## Montford Road, TW16

### £500,000

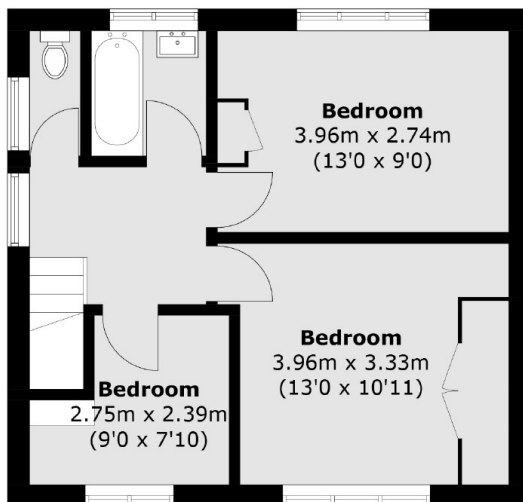
An extended three bedroom semi-detached house with a private garden. The property has been extended on the ground floor and offers a flexible layout. The house is being sold with the added bonus of no forward chain.

Montford Road is a quiet cul de sac located off Halliford Road, the River Thames, the shops in Lower Sunbury village, Sunbury Park and the famous 'Walled Garden' are all close by.

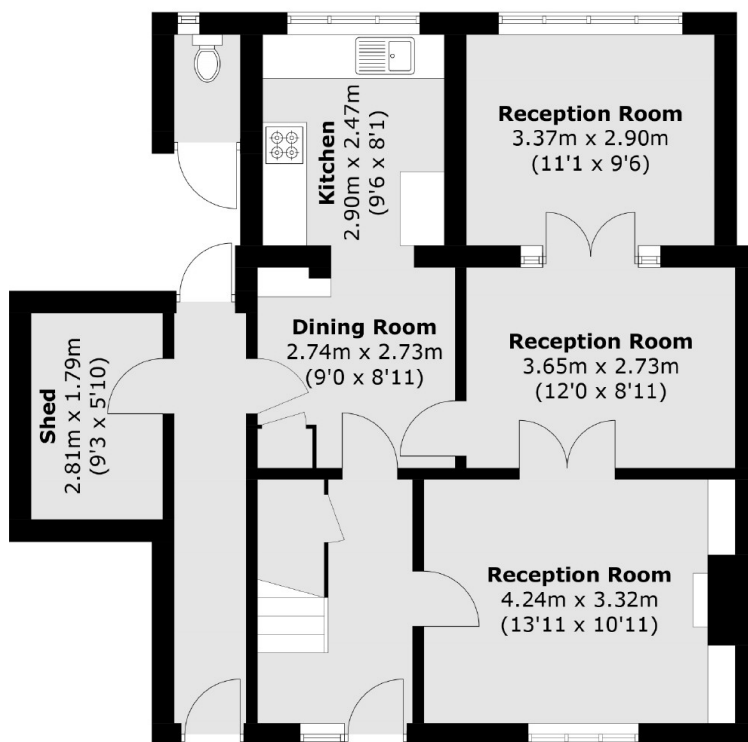
### Features

- Semi-Detached
- Three Bedrooms
- Four Reception Rooms
- Private Garden
- No Forward Chain
- Cul-De-Sac

# Montford Road, Sunbury-On-Thames, TW16



**First Floor**



**Ground Floor**

Total area (approx.): 112.0 sq. m (1,205.5 sq. ft)

WC : 1.3 sq. m (14.0 sq. ft)

Total : 113.3 sq. m (1,219.5 sq. ft)

## Dexters

Sunbury  
22 Thames Street  
Sunbury-On-Thames  
TW16 6AF

Sales  
01932 781100

Energy Rating: D. We aim to make our particulars both accurate and reliable. However they are not guaranteed; nor do they form part of an offer or contract. If you require clarification on any points then please contact us, especially if you're traveling some distance to view. Please note that appliances and heating systems have not been tested and therefore no warranties can be given as to their good working order.

 **RICS** | Regulated  
Estate Agent  
and Letting Agent

[dexters.co.uk](http://dexters.co.uk)