



## Willow Way, TW16

### £799,950

A charming three bedroom semi detached chalet bungalow with off-street parking and a large secluded rear garden. This extended, character filled property offers a flexible layout with 1,400 sq.ft of accommodation spread over two floors.

Willow Way is an amazing location, this private no through road is located off Fordbridge Road right next to a park. The village shops, riverside pubs and the 'Walled Garden' are also close by.

### Features

- Three Bedrooms
- Two Bathrooms
- Two Reception Rooms
- Off-Street Parking
- Private Road
- EV Charging Point





## Willow Way, TW16

On the ground floor there is a front reception room with a working feature fireplace, a kitchen which leads on to a dining room which overlooks the garden, a family bathroom and two generous double bedrooms.

On the first floor there is a master bedroom with a dressing area and an en suite bathroom, this spacious room could easily be reconfigured into two bedrooms if required. To the rear of the property there is an amazing landscaped rear garden. To the front there is an off street parking space.

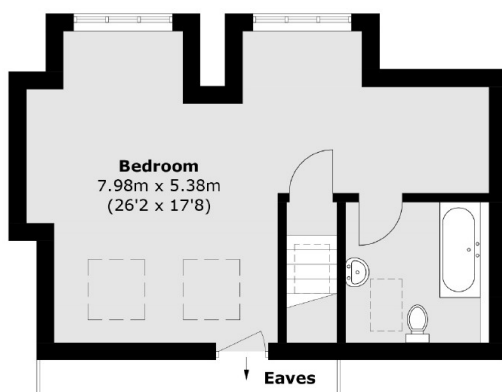
This is a property that needs to be seen to be fully appreciated. Give us a call straight away to arrange a viewing to avoid missing out.



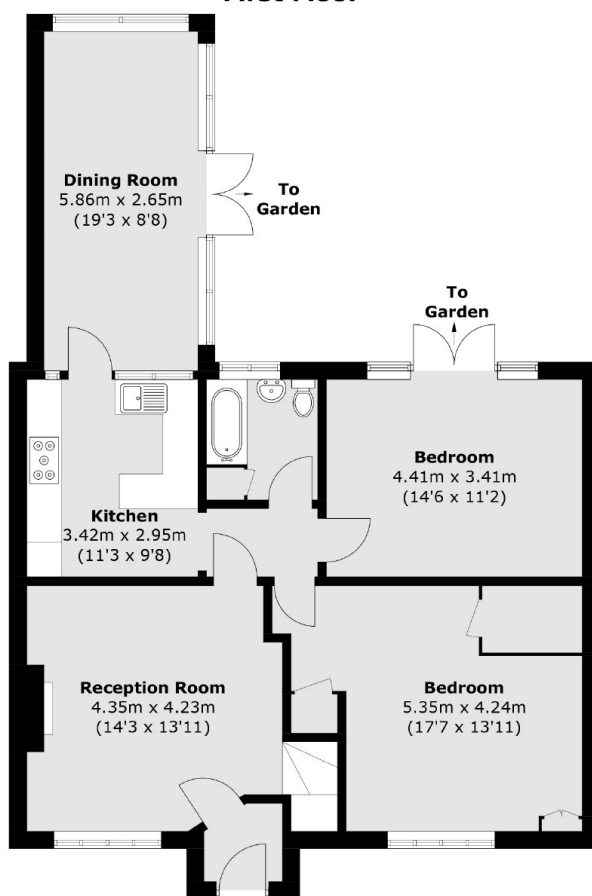




# Willow Way, Sunbury-On-Thames, TW16



**First Floor**



**Ground Floor**

Total area (approx.): 130.4 sq. m (1,403.6 sq. ft)

## Dexters

Sunbury  
22 Thames Street  
Sunbury-On-Thames  
TW16 6AF

Sales  
01932 781100

Energy Rating: C. We aim to make our particulars both accurate and reliable. However they are not guaranteed; nor do they form part of an offer or contract. If you require clarification on any points then please contact us, especially if you're traveling some distance to view. Please note that appliances and heating systems have not been tested and therefore no warranties can be given as to their good working order.

 **RICS** | Regulated  
Estate Agent  
and Letting Agent

[dexters.co.uk](https://www.dexters.co.uk)