



## Green Street, TW16

### £650,000

A three-bedroom semi-detached Victorian house which has been modernised to a high standard by the current owners to create a modern contemporary home. Early viewings are advised to avoid disappointment!

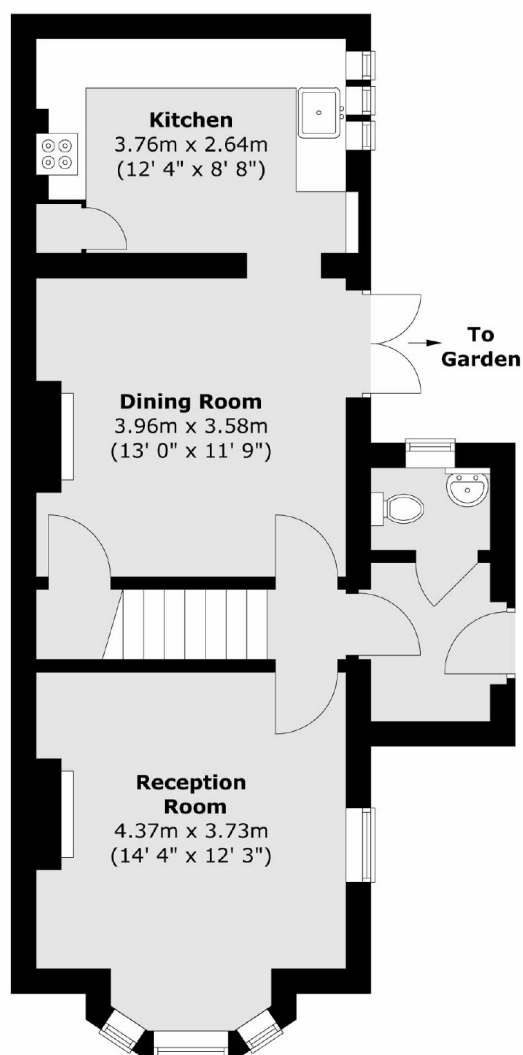
Located on Green Street, the River Thames is just a stone's throw away and Sunbury station is at the top of the road, providing a direct service into London Waterloo.

### Features

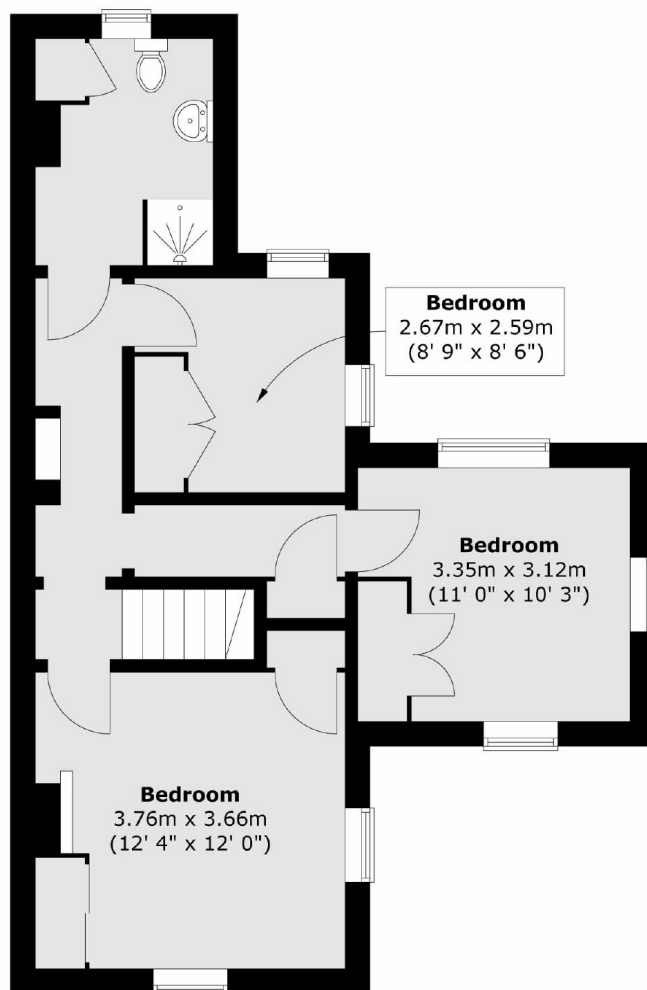
- Semi-Detached
- Three Bedrooms
- Modern Finish
- Private Garden
- Garage
- Prime Location

# Green Street, Sunbury-On-Thames, TW16

Ground Floor



First Floor



Total area (approx.) : 100.8 sq. m (1085 sq. ft)