



## Lower Hampton Road, TW16

### £950,000

A charming three bedroom detached house overlooking Rivermead Island and the River Thames. The property is filled with character and offers potential to extend (STPP), there is also the added bonuses of a detached garage and no forward chain.

Located in the heart of Lower Sunbury, on a corner plot, this location is hard to beat. The River Thames is just across the road and the local village shops, restaurants and riverside pubs are also close by.

### Features

- Detached
- Three Bedrooms
- Two Bathrooms
- Two Reception Rooms
- Potential to Extend (STPP)
- Garage





## Lower Hampton Road, TW16

On the ground floor there is a welcoming entrance hallway with a cloakroom, a bay fronted reception, a second reception room which leads on to the garden and a kitchen with a central island.

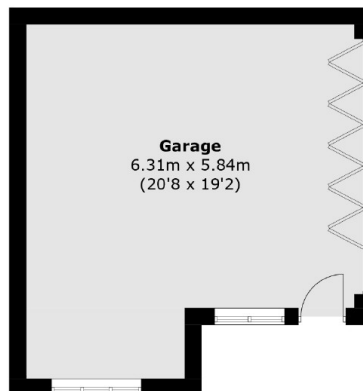
On the first floor there is a bay front master bedroom with built in wardrobes and an en suite bathroom. There are two further bedrooms and a family bathroom.

To the front of the house there is a beautiful front garden, to the rear there is a large garden with a patio area for entertaining, a lawn and mature borders. There is also a detached garage at the bottom off the garden with an off street parking space in front.

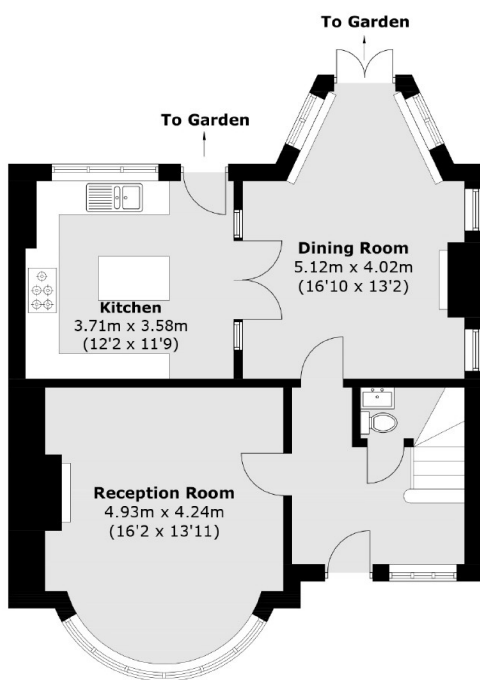




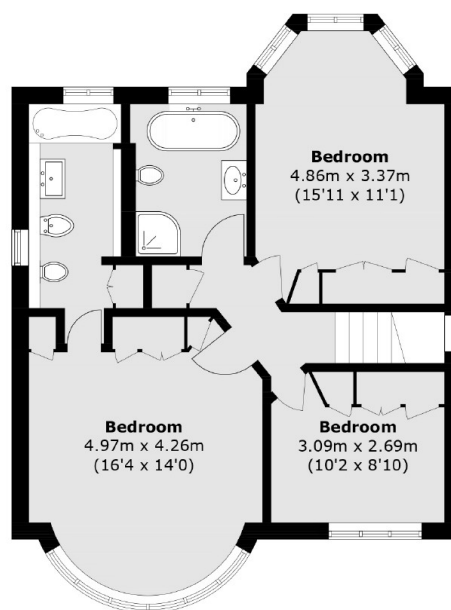
# Lower Hampton Road, Sunbury-On-Thames, TW16



(Not Shown In Actual  
Location / Orientation)



**Ground Floor**



**First Floor**

Total area (approx.): 122.4 sq. m (1,317.4 sq. ft)  
Garage: 33.8 sq. m (363.8 sq. ft)