



**Thames Street, TW16**  
**£2,300,000**

**Dexters**



## Thames Street, TW16

This stunning Victorian High Gothic terraced house, built in 1850 by renowned church builders, the Dove brothers, as their family home.

With its own private mooring on the River Thames, this remarkable property is believed to have been constructed while the brothers worked on the restoration of Hampton Court Palace. The home showcases striking ecclesiastical influences, from high ceilings to intricate period features, such as carved staircases and stained glass window. Spanning five floors, it dominates the riverside in Lower Sunbury with its slate roof, decorative clay ridge tiles and a beautiful split gable porch. With five bedrooms, two family bathrooms, and three reception rooms, this home offers ample space and flexibility to suit any lifestyle. The south-facing rear boasts a large extended balcony with stunning views. Additional features include a utility room and storage room. While the current owners have made thoughtful improvements, the homes original features have been preserved, enhancing its status as a property of historic and architectural significance.

Situated in the heart of Lower Sunbury village, near local shops, award winning restaurants, and scenic spots like The Walled Garden, with easy access to the M3 and Kempton Park station just a mile away.

### Features

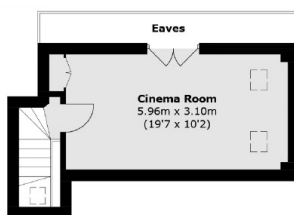
- Five Bedrooms
- Stunning Period Features
- Three Reception Rooms
- Private Mooring
- Large Balcony
- Mature Garden



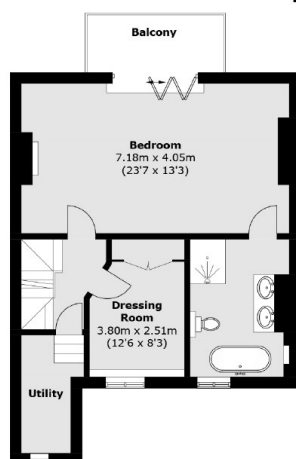




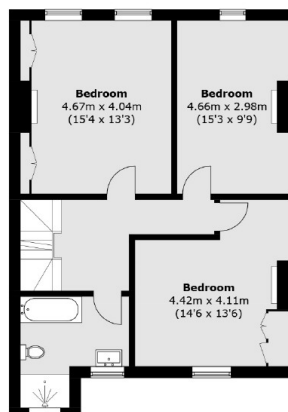
# Thames Street, Sunbury-On-Thames, TW16



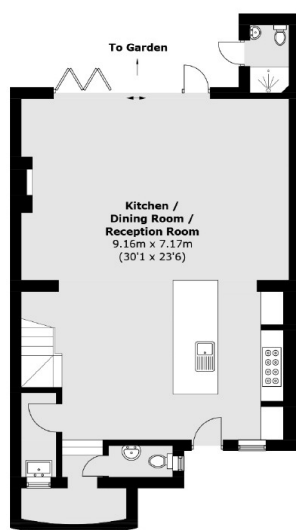
Third Floor



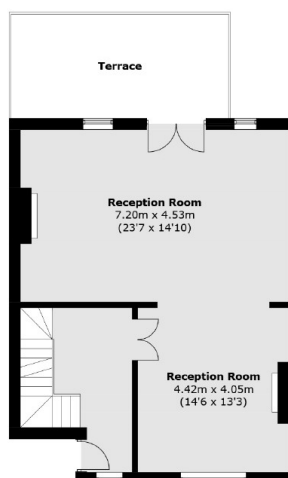
Second Floor



First Floor



Lower Ground Floor



Ground Floor

Total area (approx.): 288.7 sq. m (3,107.5 sq. ft)  
(Excluding Eaves)  
Balcony & Terrace: 20.4 sq. m (219.6 sq. ft)  
Bathroom: 2.0 sq. m (21.5 sq. ft)