



## Staines Road East, TW16

### £825,000

An imposing five bedroom detached family home on a large plot with a wrap around garden. This unique property offers over 2,500 sq.ft of flexible accommodation spread over two floors and is being sold with the added bonus of no forward chain.

The house is located on the corner of the Staines Road East and Park Road, everything Lower Sunbury has to offer is easily accessible including both Sunbury and Kempton Park Stations which provide a direct service into London Waterloo.

### Features

- Detached
- Five Bedrooms
- Three Reception Rooms
- Large Rear Garden
- Off-Street Parking
- No Forward Chain



## Staines Road East, TW16

On the ground floor there is a welcoming entrance hallway, two bay fronted reception rooms, a dining room, kitchen, utility room and W.C.

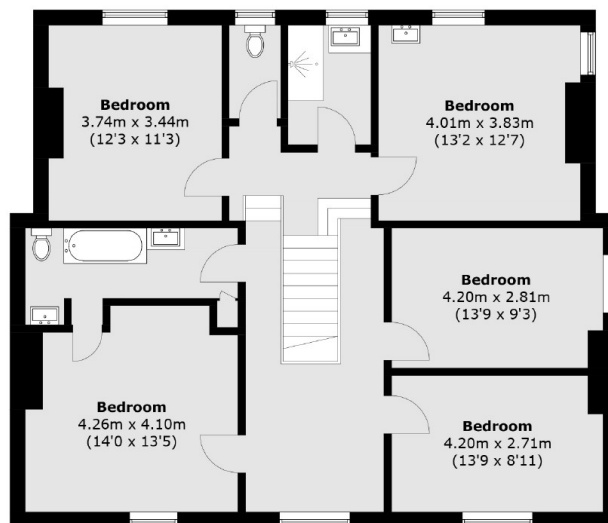
On the first floor there is a master bedroom with an en suite jack and jill bathroom. There are four further bedrooms and a family bathroom with a separate W.C. There is a large wrap around garden and off street parking for approximately four cars.

This incredible property is filled with character and has further potential to be extended subject to planning permission. Call us straight away to arrange a viewing to avoid missing out.

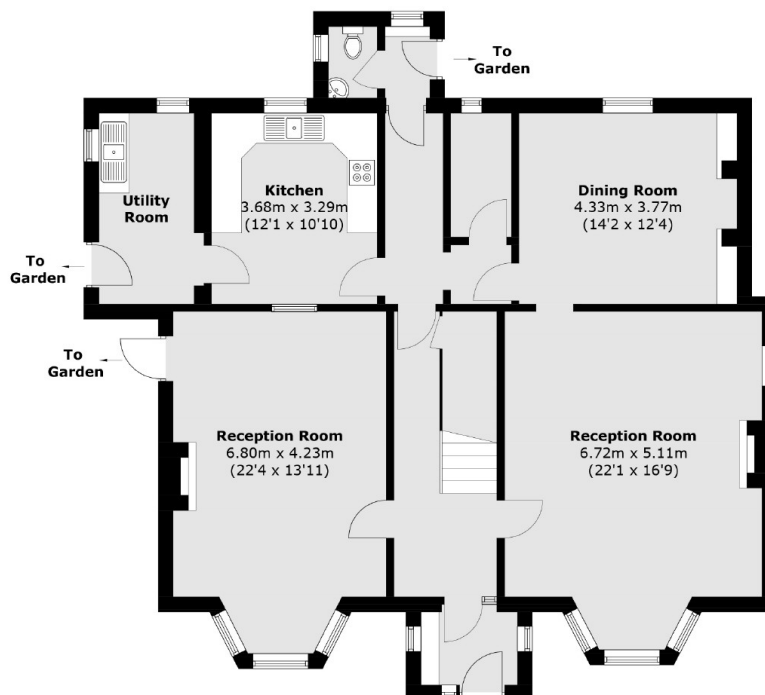




# Staines Road East, Sunbury-On-Thames, TW16



**First Floor**



**Ground Floor**

Total area (approx.): 234.7 sq. m (2,526.3 sq. ft)