



Willow Way, TW16

£820,000

A charming three bedroom semi detached house with off street parking and a large rear garden. This character filled property offers a flexible layout with accommodation spread over two floors.

Willow Way is an amazing location, this private road is located off Fordbridge Road right next to a park. The village shops, riverside pubs and the 'Walled Garden' are also close by.

Features

- Semi Detached
- Three Bedrooms
- Two Bathrooms
- Two Reception Rooms
- Off Street Parking
- Private Road



Willow Way, TW16

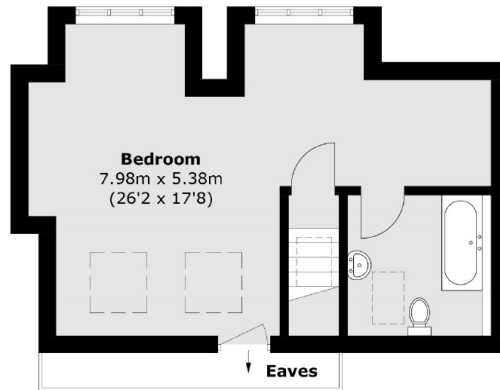
On the ground floor there is a front reception room with a working feature fireplace, a kitchen which leads on to a second reception room which overlooks the garden, a family bathroom and two generous double bedrooms.

On the first floor there is a spacious master bedroom with a dressing area and an en suite bathroom. To the rear of the property there is an amazing landscaped rear garden. To the front there is an off street parking space.

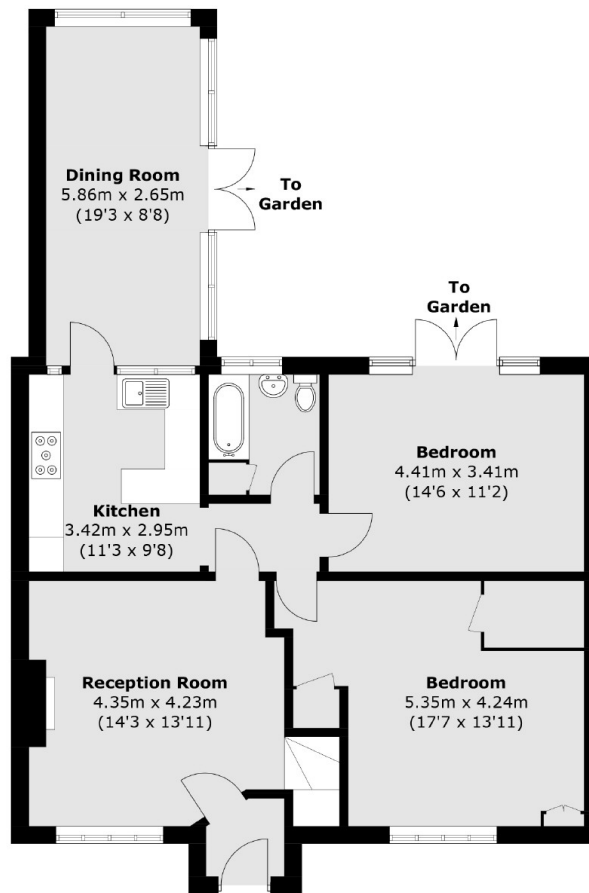
This is a property that needs to be seen to be fully appreciated. Give us a call straight away to arrange a viewing to avoid missing out.



Willow Way, Sunbury-On-Thames, TW16



First Floor



Ground Floor

Total area (approx.): 130.4 sq. m (1,403.6 sq. ft)