



Staines Road West, TW16

£190,000

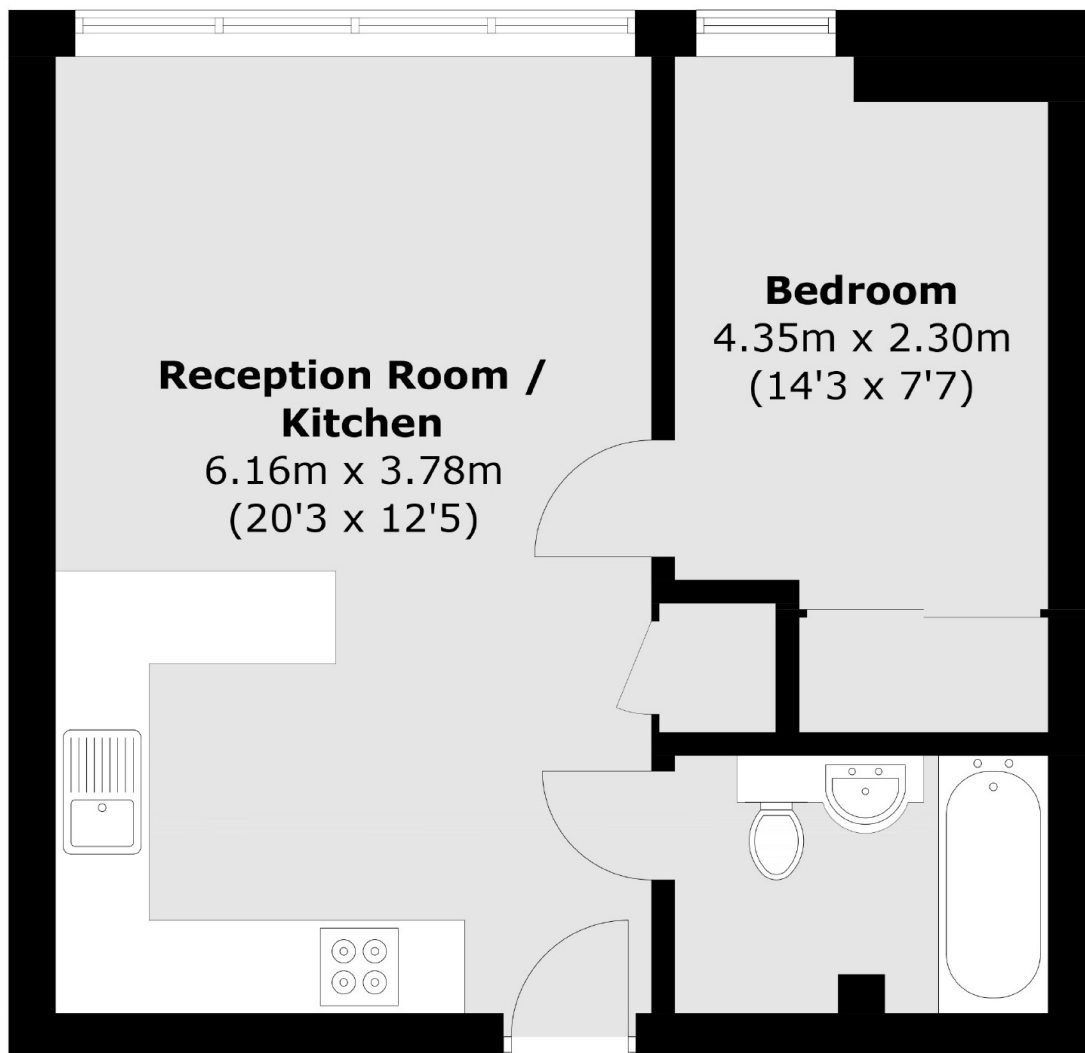
A modern, first floor, one bedroom apartment that offers a light and spacious open plan living space combining both a reception area and fully fitted kitchen with integrated appliances. The property is being sold with the added bonuses of a modern bathroom, no forward chain and an allocated parking space.

Grandera House is located close to Sunbury Station and the A316/M3 for easy access into London and beyond. The local shops at Sunbury Cross are just across the road.

Features

- One Bedroom
- First Floor
- Smartly Presented
- No Onward Chain
- Allocated Parking
- Lift

Staines Road West, Sunbury-On-Thames, TW16



Total area (approx.): 39.4 sq. m (424.1 sq. ft)