



**Roper Crescent, TW16**

**£950,000**

**Dexters**



## Roper Crescent, TW16

This large four bedroom family home has a private garage and off-street parking. The property was built by Crest Nicholson in 2017 and forms part of the exclusive Park Avenue development.

This spacious family home is spread over three floors. On the ground floor there is a separate kitchen, dining room and spacious living room with bi-fold doors leading out onto the rear garden. The ground floor has the added bonus of a WC and private garage.

On the first floor there are two double bedrooms with built-in wardrobes, family bathroom, a further bedroom with en suite and study. On the top floor there is a large main bedroom with built-in wardrobes and en suite.

To the rear of the property there is a large west facing turfed garden which is perfect for the kids and for entertaining friends and family.

Roper Crescent is located just off of the Avenue in Lower Sunbury. Sunbury Park, the 'Walled Garden', the local village shops and the River Thames are all close by. Sunbury station is under half a mile away and provides a direct service into London Waterloo.

### Features

- Four Bedrooms
- Three Bathrooms
- Study
- Garage
- Off-Street Parking
- Landscaped Garden

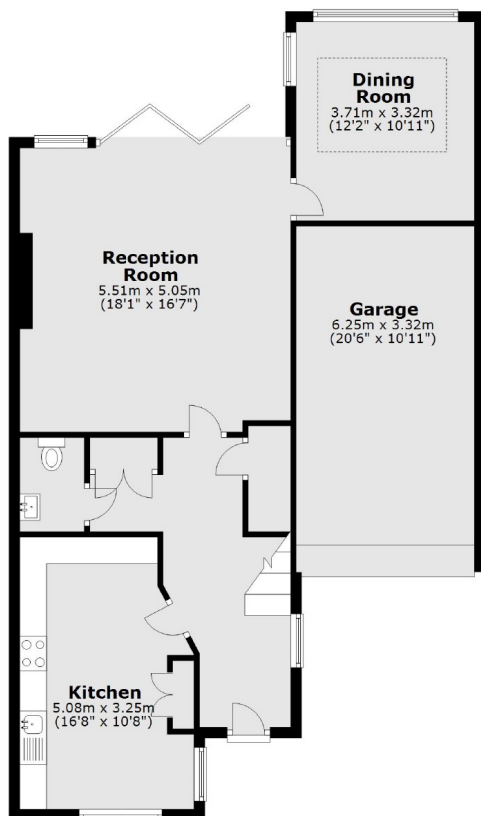




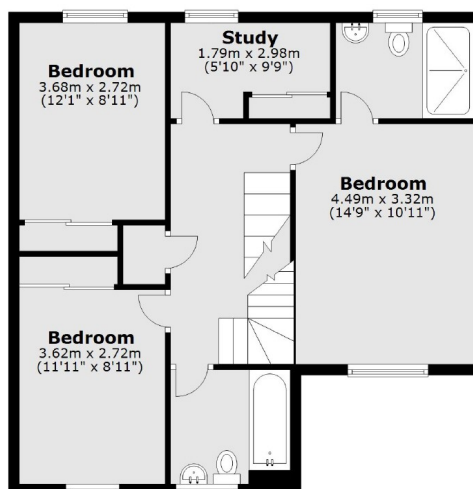


# Roper Crescent, Sunbury-On-Thames, TW16

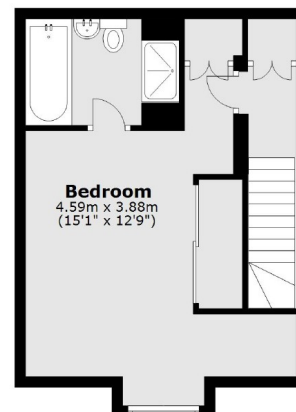
Ground Floor



First Floor



Second Floor



Total area: approx. 193.8 sq. metres (2086.0 sq. feet)