



Lindsay Drive, TW17

£1,000,000

Dexters



Lindsay Drive, TW17

This beautifully modernised four-bedroom detached home, offers contemporary living across two floors. An exceptional family home. Early viewings are highly recommended to avoid disappointment

Step into this stunning modern home, designed for luxurious living and entertaining. From the moment you enter, you'll notice the meticulous attention to detail, including a welcoming porch and coat storage. The ground floor boasts zoned underfloor heating and integrated audio, perfect for hosting.

The heart of the home is a breathtaking open plan kitchen, complete with a chic diner-style booth and sliding doors leading on to a private, secluded garden. A fully equipped home office and a spacious reception room complete the ground floor. Upstairs, you'll find four generous bedrooms and a stylish family bathroom. With added convenience of a utility room and integrated garage, this property has everything you need for modern living. Don't miss your chance to make this dream home your own!

Located on Lindsay Drive which is a quiet location the property provides access to Shepperton, Sunbury and Walton. Shepperton Station, which provides a direct service into Waterloo and High Street are just over half a mile away.

Features

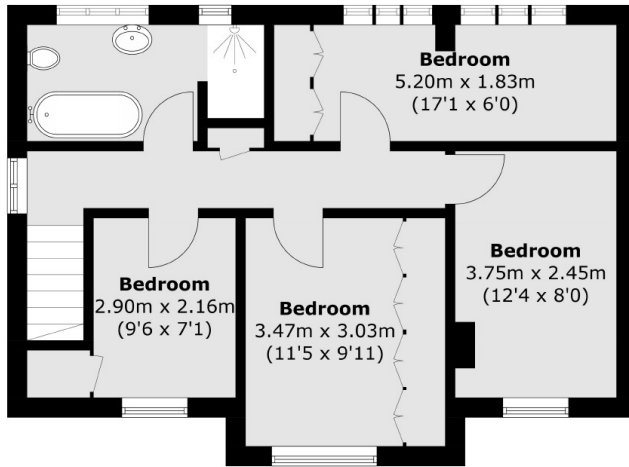
- Detached House
- Four Bedrooms
- Open Plan Living
- Home Office
- Private Garden
- Quiet cul-de-sac





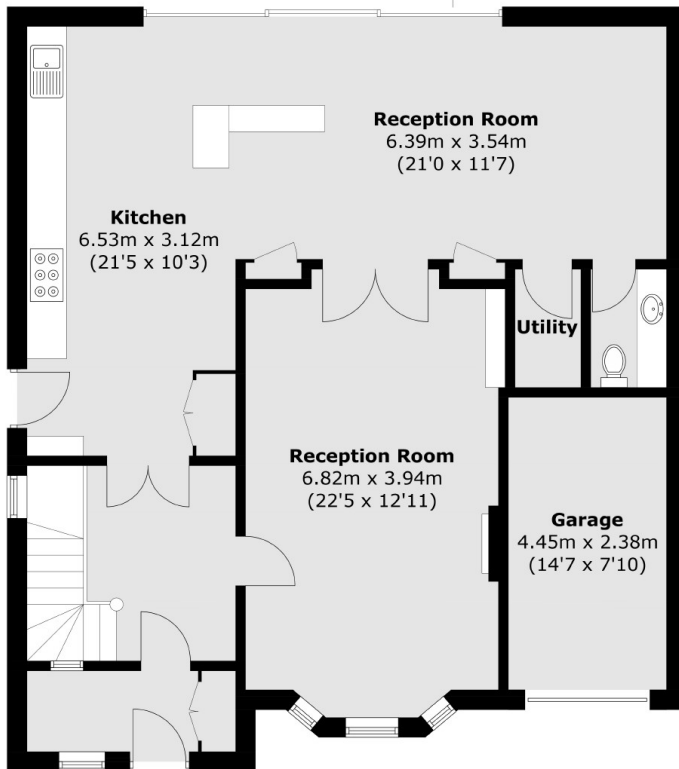


Lindsay Drive, Shepperton, TW17



First Floor

To Garden



Ground Floor

Total area (approx.): 155.8 sq. m (1,677.0 sq. ft)

Garden office: 7.2 sq. m (77.5 sq. ft)