



## Peregrine Road, TW16

£319,950

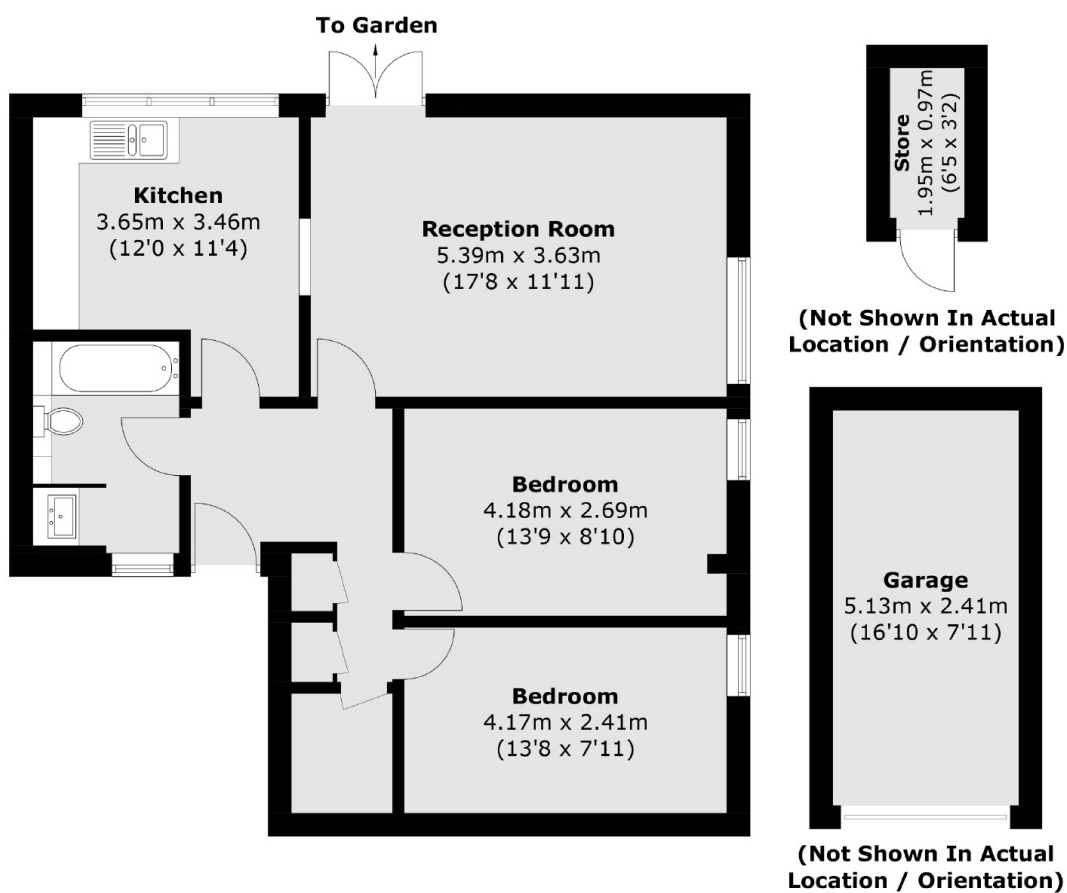
This spacious two-bedroom ground floor apartment is an ideal starter home, offering generous living space. Early viewings are highly recommended to appreciate the full potential

Peregrine Road is located off Nursery Road, Upper Halliford Station which provides a direct service into Waterloo, is close by. Sunbury Park and the River Thames are just over a mile away.

### Features

- Purpose Built Block
- Two Bedrooms
- Ground Floor
- Communal Gardens
- Leasehold
- Gated Development

# Peregrine Road, Sunbury-On-Thames, TW16



Total area (approx.): 70.2 sq. m (755.6 sq. ft)  
Garage / Store area (approx.): 14.4 sq. m (155.0 sq. ft)