



Burgoyne Road, TW16

£499,950

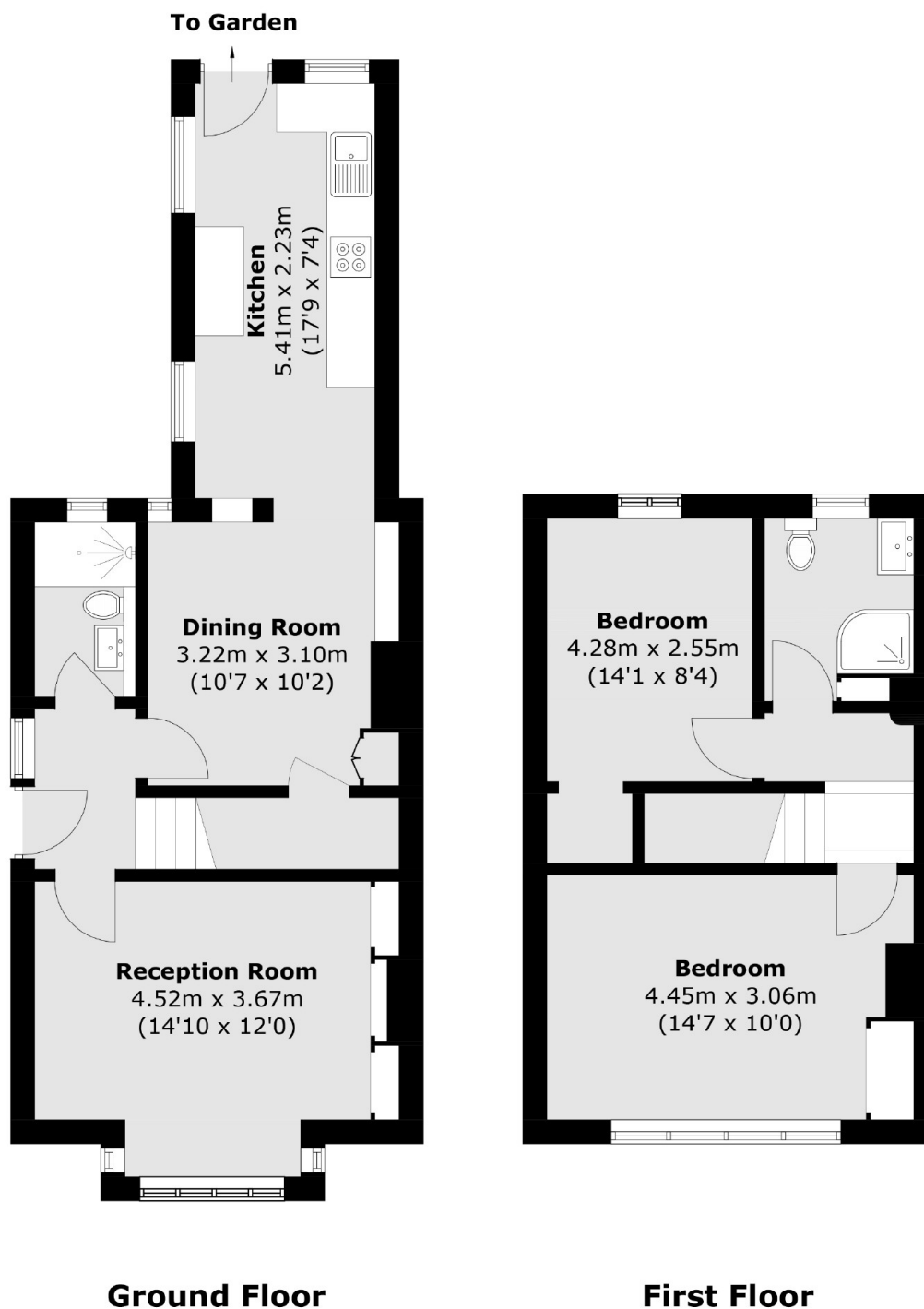
A charming 1930's semi-detached two bedroom house with a spacious driveway and huge potential for expansion (STPP) offering flexible living accommodation that can be used in the number of ways.

Burgoyne Road a residential road located leading to Sunbury Cross, Sunbury Station is close by and provides a direct service into London Waterloo. Motorists also have easy access to the M3, M25 and A316.

Features

1930's Semi-Detached
Two Double Bedrooms
Spacious Driveway
Large Private Garden
Potential to Extend (STPP)
Chain Free

Burgoyne Road, Sunbury-On-Thames, TW16



Total area (approx.): 81.5 sq. m (877.1 sq. ft)