



## Lower Hampton Road, TW16

£1,250,000

Set in a stunning riverside location, this modern townhouse offers expansive River Thames views and a private mooring. With over 2,100 sq ft of elegant, flexible living space across three floors, it epitomises luxury living.

Pucks Corner is located on the Lower Hampton Road and is just under a mile from Hampton Train Station which provides a direct service into London Waterloo.

### Features

- Neo Georgian Townhouse
- Over 2100 Sq Ft
- Riverside Location
- Spacious Accommodation
- Far Reaching River Views
- Double Garage



## Lower Hampton Road, TW16

The ground floor welcomes you with a spacious entrance hallway, a convenient cloakroom, a cosy front reception room, and a generously sized rear reception room that seamlessly opens onto the private garden with perfect indoor-outdoor living.

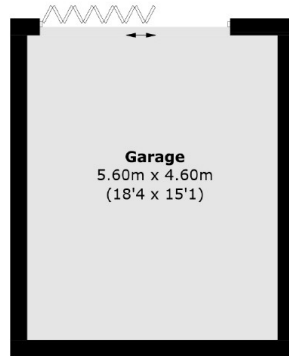
Ascending to the first floor, you'll discover a large, elegant reception room with a balcony, offering breathtaking views of the River Thames. This floor also hosts a comfortable double bedroom with luxurious en suite bathroom.

The second and top floor is dedicated to the restful living featuring a master bedroom complete with an en suite shower room, two additional well-appointed bedrooms, and a stylish family bathroom.

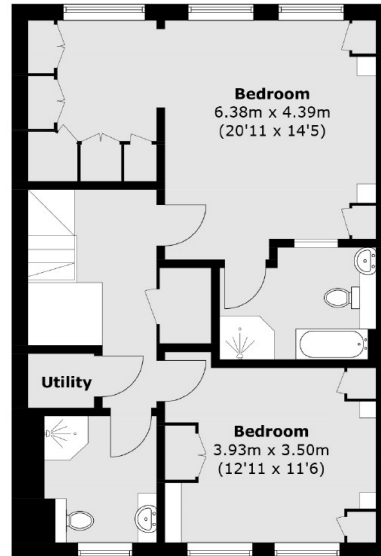
At the front of the property, a double garage provides ample storage, while the rear garden, mostly laid to lawn, includes steps leading onto a private mooring, ideal for river enthusiasts.



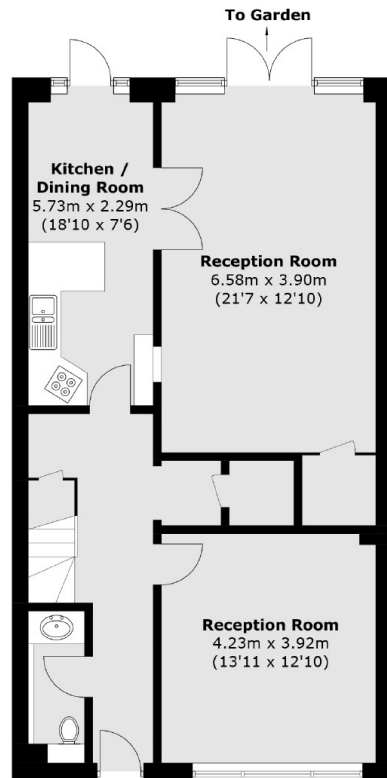
# Lower Hampton Road, Sunbury-On-Thames, TW16



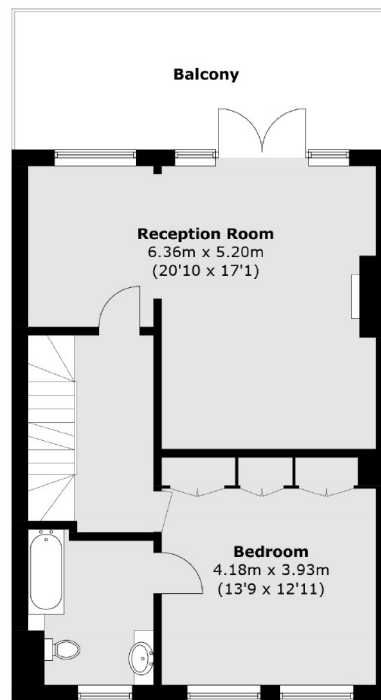
(Not Shown In Actual  
Location / Orientation)



**Second Floor**



**Ground Floor**



**First Floor**

Total area (approx.): 200.8 sq. m (2161.2 sq. ft)  
Garage area (approx.): 26.3 sq. m (283.0 sq. ft)  
Balcony area (approx.): 17.4 sq. m (187.2 sq. ft)