



Parke Road, TW16

£850,000

A four bedroom detached home perfectly placed in a picturesque private location complete with an abundance of storage, a well presented, attractive garden, double garage and has the potential to extend (STTP).

Parke Road is a private riverside road located off Fordbridge Road within easy access of the River Thames, the local shops, Sunbury Park and the riverside pubs.

Features

- Double Garage
- Four Bedrooms
- Chain Free
- Indoor Swimming Pool
- Great Storage
- Two Bathrooms



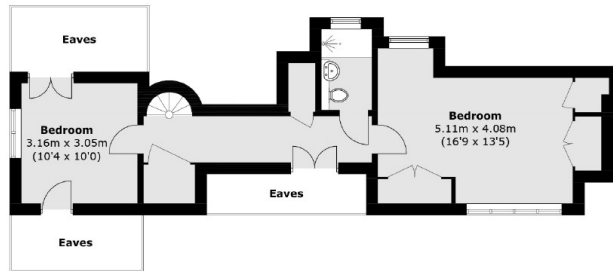
Parke Road, TW16

This Impressive home offers attractive accommodation, vaulted ceilings and character charm throughout. The property offers a wonderfully sized reception room with a feature fireplace, perfect for entertaining, sat adjacent to an expansive conservatory with the unique quirk of a hidden indoor swimming pool below the surface and an elegant spiral staircase.

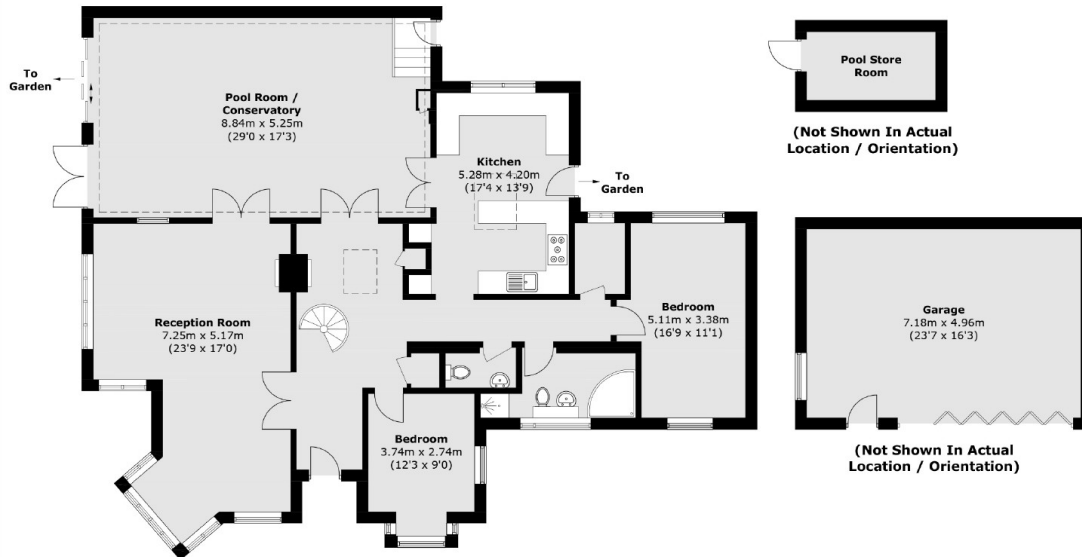
On the first floor there are a further two double bedrooms and a bathroom as well as plenty of storage. This property further benefits from an attractive large garden with close access to the River Thames.



Parke Road, Sunbury-On-Thames, TW16



First Floor



Ground Floor

Total area (approx.): 211.5 sq. m (2,276.6 sq. ft)
(Excluding Eaves)
Garage / Pool Store Room: 42.6 sq. m (458.5 sq. ft)