



Seymour Way, TW16

£220,000

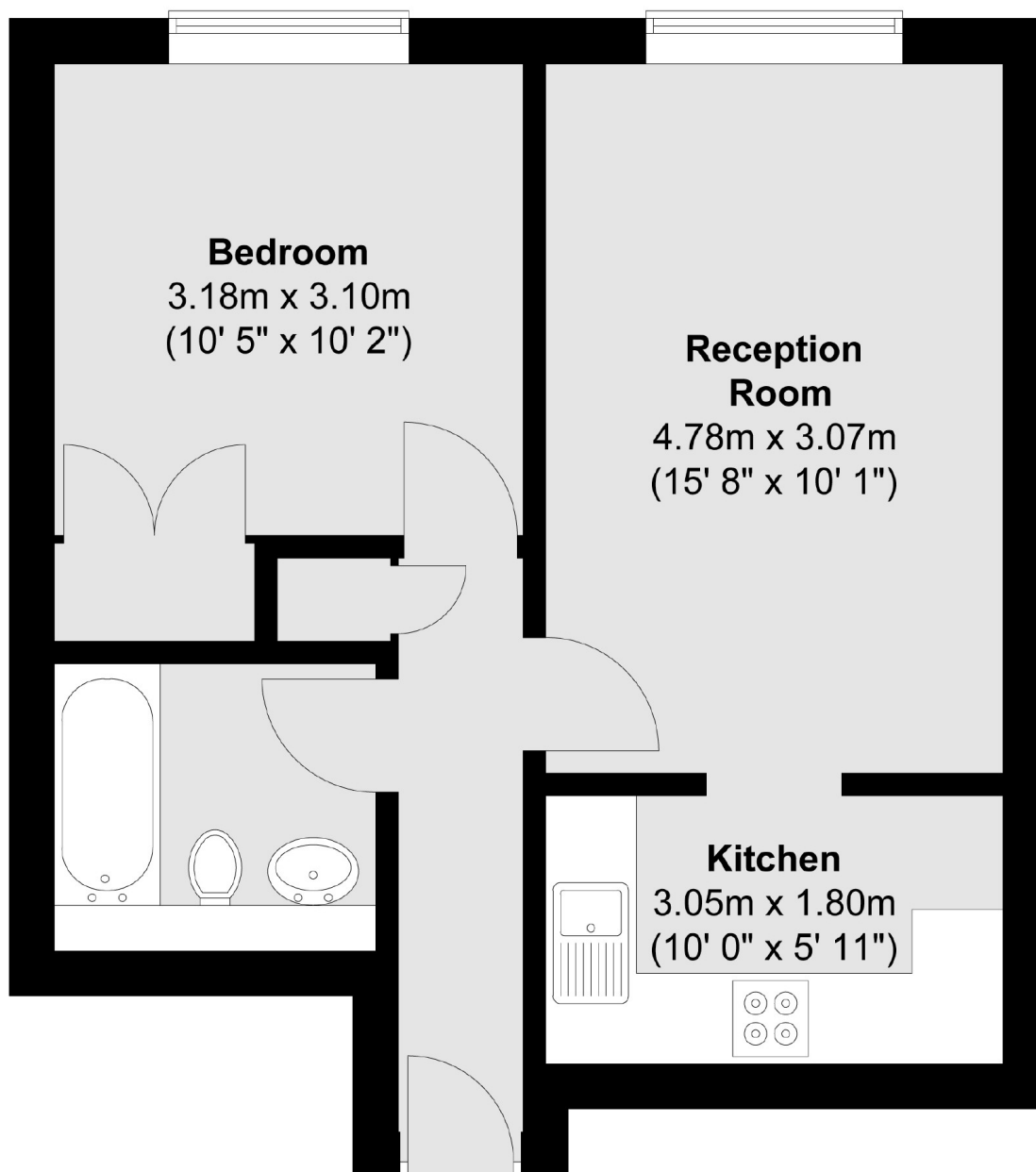
A well presented top floor apartment offering approximately flexible living accommodation. The property would suit first time buyers, investors or buyers looking for a safe and secure pied-a-terre.

Set within a popular residential cul-de-sac, Seymour Way is ideally located for the local amenities and services at Sunbury Cross Shopping Centre including a Marks & Spencer Simply Food, Boots Pharmacy, Costa Coffee and a 24 hour gym. The property provides easy access onto the M3 motorway and is within 0.9 miles of Sunbury train station.

Features

- One Double Bedroom
- Open Plan Kitchen
- Top Floor Flat
- Spacious Reception Room
- Modern Bathroom
- Parking Space

Seymour Way, Sunbury-On-Thames, TW16



Total area (approx.) : 41.7 sq. m (449 sq. ft)