



Maryland Way, TW16

£1,100,000

A stunning refurbished and extended five bedroom detached house with off-street parking and a garage. This amazing family home is made up of flexible accommodation and is perfect for an up-sizing family looking for a house that they can just move straight into.

Maryland Way is an amazing location, this quiet road is located within the popular Berg development in the heart of Lower Sunbury. The local village shops, the River Thames and riverside pubs, Sunbury Park and Sunbury station are all close by.

Features

- Detached
- Fully Refurbished
- Five Bedrooms
- Three Bathrooms
- Utility Room
- Garage



Maryland Way, TW16

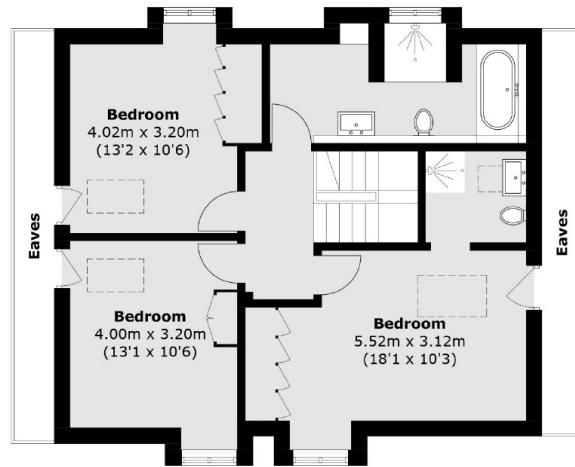
On the ground floor there is a welcoming entrance hallway, front reception room that is current used as a playroom which could also be used as a fifth bedroom, a bathroom, a utility room and an incredible open plan kitchen and living space which opens out on to the rear garden.

On the first floor there is a generous master bedroom with built in wardrobes and an en suite shower room. There are two further double bedrooms and a modern family bathroom with a bath and separate walk in shower. To the rear of the house there is a landscaped garden which is ideal for entertaining friends and family. To the front there is ample off street parking and access to the garage.

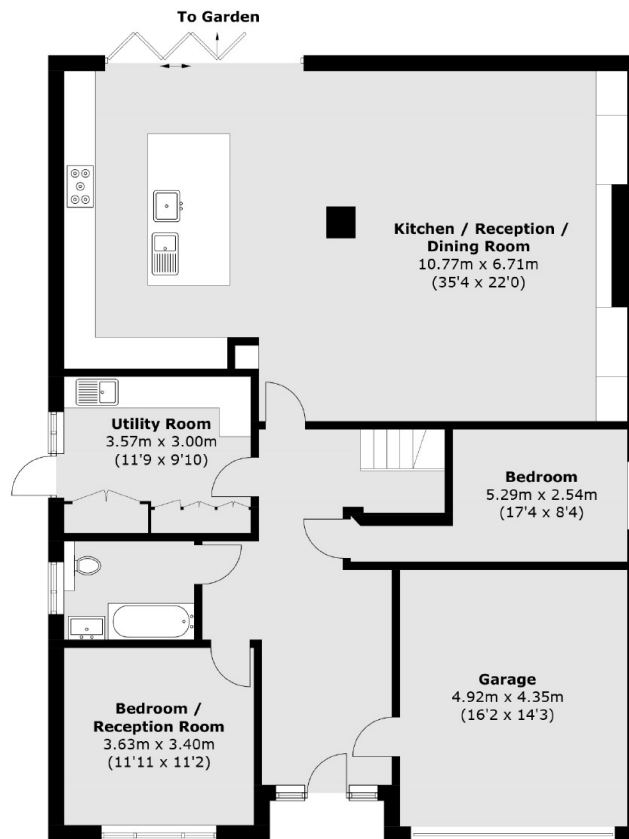
Houses of this size and space, finished to such a high standard do not come on to the market often. This is a property that must be viewed to be fully appreciated. Give us a call straight away to avoid missing out.



Maryland Way, Sunbury-On-Thames, TW16



First Floor



Ground Floor

Total area (approx.): 220.3 sq. m (2,371.3 sq. ft)
(Excluding Eaves)