



## Manor Lane, TW16

### £1,100,000

A recently refurbished and substantially extended four/five bedroom detached house with a large south facing rear garden, off-street parking and a garage. This property offers just under 1800 sq ft of flexible accommodation and is set up and ready for the new owners to just unpack.

Located on Manor Lane, between The Avenue and French Street, the property is in a great location in the heart of Lower Sunbury. The River Thames, Sunbury Park and the popular Chennestone School are all close by.

### Features

- Detached
- Fully refurbished
- Four/Five Bedrooms
- South Facing Garden
- Off Street Parking
- Garage





## Manor Lane, TW16

On the ground floor there is a welcoming entrance hallway, a bay fronted reception room, two further reception rooms which could also be used as additional bedrooms, a stunning open plan kitchen, dining and living room with bi folding doors leading out on to the rear garden. There is also the added bonuses of a ground floor shower room with a W.C and a utility room.

On the first floor there is a master bedroom with an en suite shower room, two further double bedrooms and a family bathroom. To the front of the property there is off street parking for two/ three cars and access to the garage. To the rear there is a large South facing garden with a patio area, an expansive lawn and mature trees.

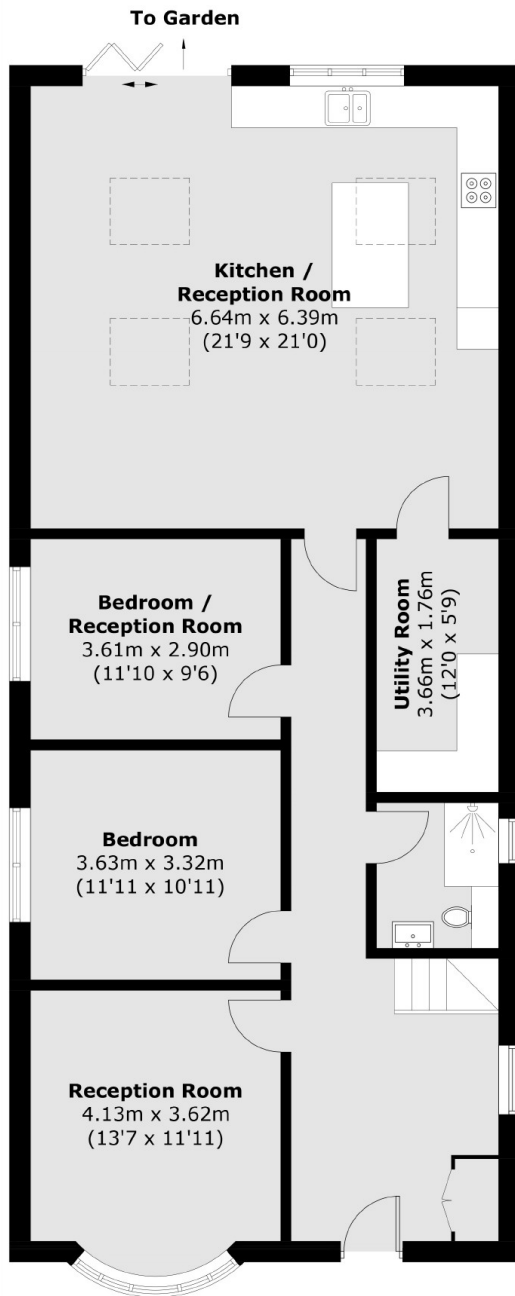
This is an amazing family home that must be viewed to be fully appreciated, call us straight away to arrange a viewing and to avoid missing out on this stunning house.



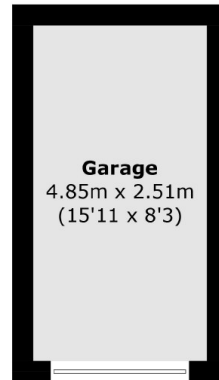




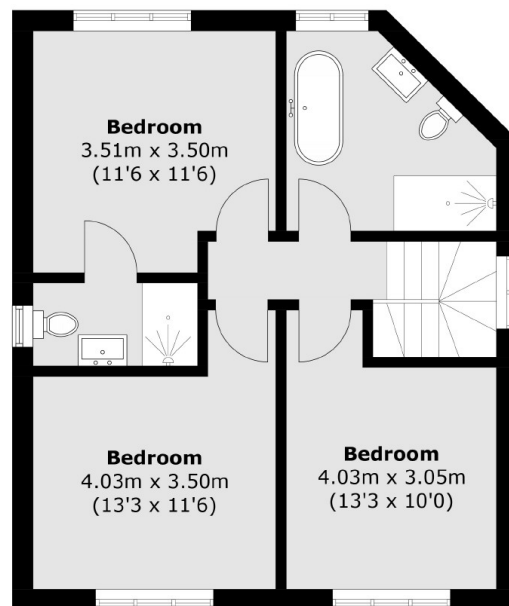
# Manor Lane, Sunbury-On-Thames, TW16



**Ground Floor**



(Not Shown In Actual  
Location / Orientation)



**First Floor**

Total area (approx.): 166.3 sq. m (1,790 sq. ft)  
Garage: 12.2 sq. m (131.3 sq. ft)