



Holly Close, TW16

£725,000

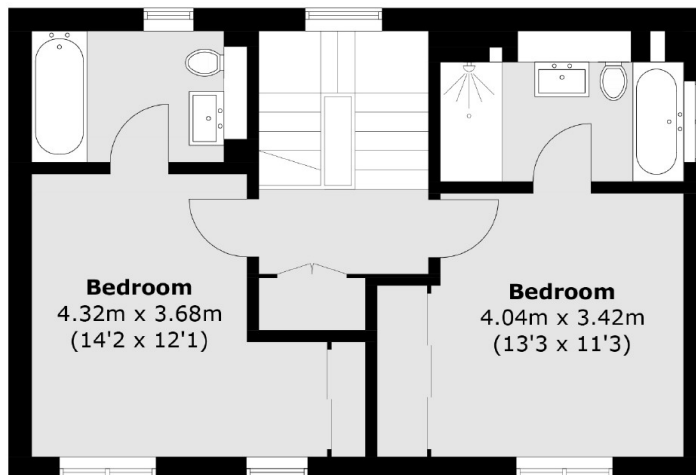
A stunning two bedroom, two bathroom modern house in a gated development with a walled garden with side access and two allocated parking spaces. The property is immaculately presented throughout and is perfect for someone looking for a house that they can just move straight into.

Holly Close is an amazing location, this private gated development is just off Church Street, everything Sunbury Village has to offer is close by including, the River Thames, riverside pubs and Sunbury Park and the famous 'Walled Garden'.

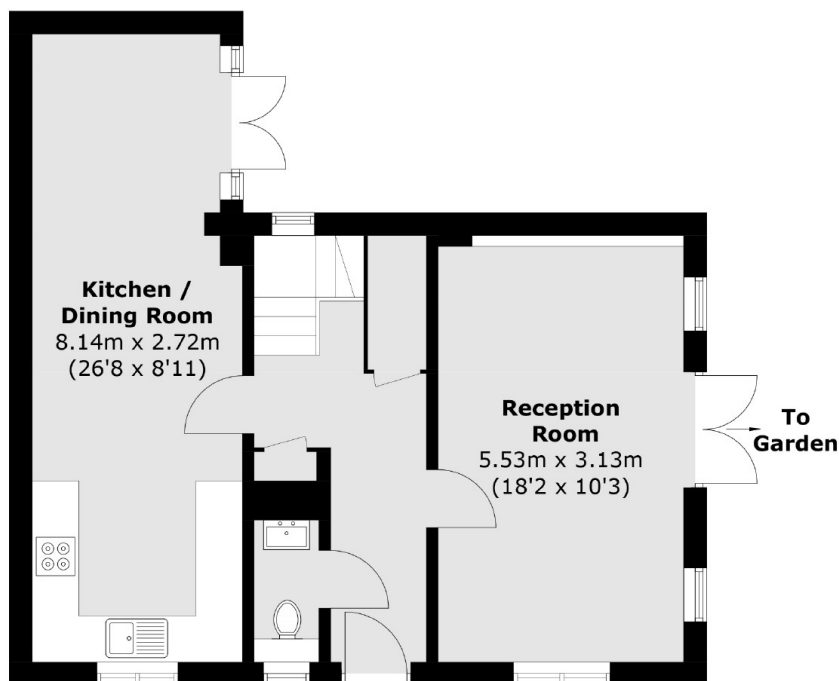
Features

- Modern House
- Two Bedrooms
- Two Bathrooms
- Gated Development
- Two Parking Spaces
- Private Walled Garden

Holly Close, Sunbury-On-Thames, TW16



First Floor



Ground Floor

Total area (approx.): 100.1 sq. m (1,077.5 sq. ft)