



Ravendale Road, TW16

£470,000

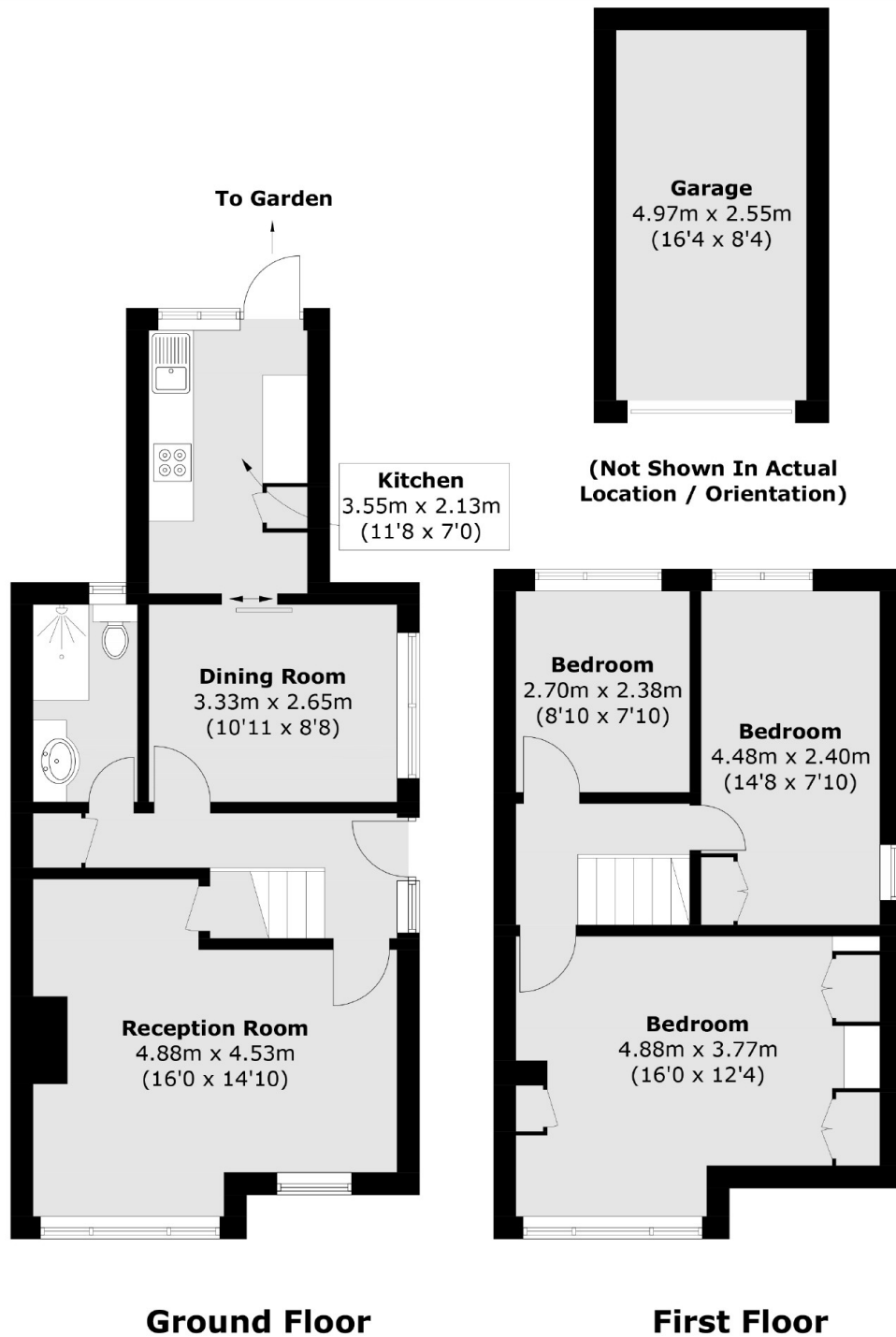
A three bedroom semi detached home perfect for a family looking to put their own stamp on. This property boasts stunning potential with two reception rooms, separate kitchen, three bedrooms and a patio garden, being sold with the added bonus of no forward chain.

Ravendale Road is a great location off Nursery Road and Stratton Road with Cedars Recreation Ground just around the corner. The River Thames, riverside pubs, local schools and Upper Halliford station are all close by.

Features

- Semi Detached
- Three Bedrooms
- Extended Ground Floor
- Garage
- Garden
- No Forward Chain

Ravendale Road, Sunbury-On-Thames, TW16



Total area (approx.): 86.2 sq. m (927.8 sq. ft)
Garage (approx.): 12.7sq. m (136.7 sq. ft)