



## The Avenue, TW16

£1,250,000

A beautiful five bedroom detached house with off street parking, garage and a stunning rear garden. This spacious family home offers just under 2000 sq ft of flexible accommodation spread over two floors, this is an ideal property for an up-sizing family.

The Avenue is the road in Lower Sunbury to live on! Located in the centre of the village, the position is unbeatable! The local village shops, the River Thames and riverside pubs, Sunbury Park and the station which provides a direct service to Waterloo are all close by.

### Features

- Detached
- Five Bedrooms
- Two Reception Rooms
- Three Bathrooms
- Off Street Parking
- Amazing Rear Garden



## The Avenue, TW16

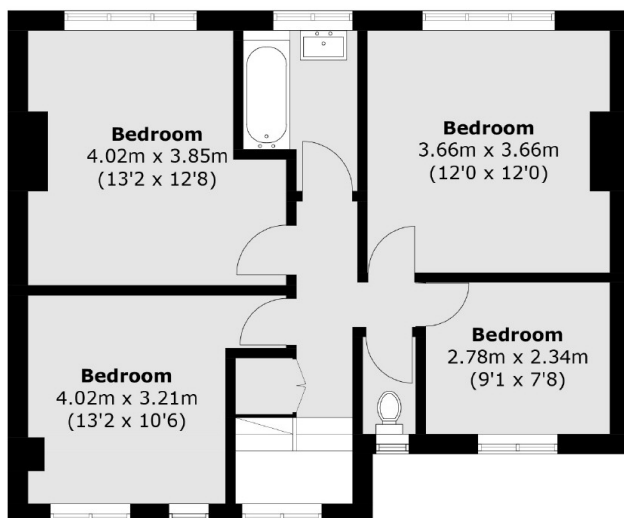
On the ground floor there is a welcoming entrance hallway, kitchen dining room, shower room with W.C., rear reception room leading out on to the garden and a second reception room also leading out on to the garden. There is also the added bonus of a downstairs bedroom with an en suite shower room.

On the first floor there are four well proportioned bedrooms and a family bathroom with a separate W.C. The property offers further scope to extend subject to planning permission.

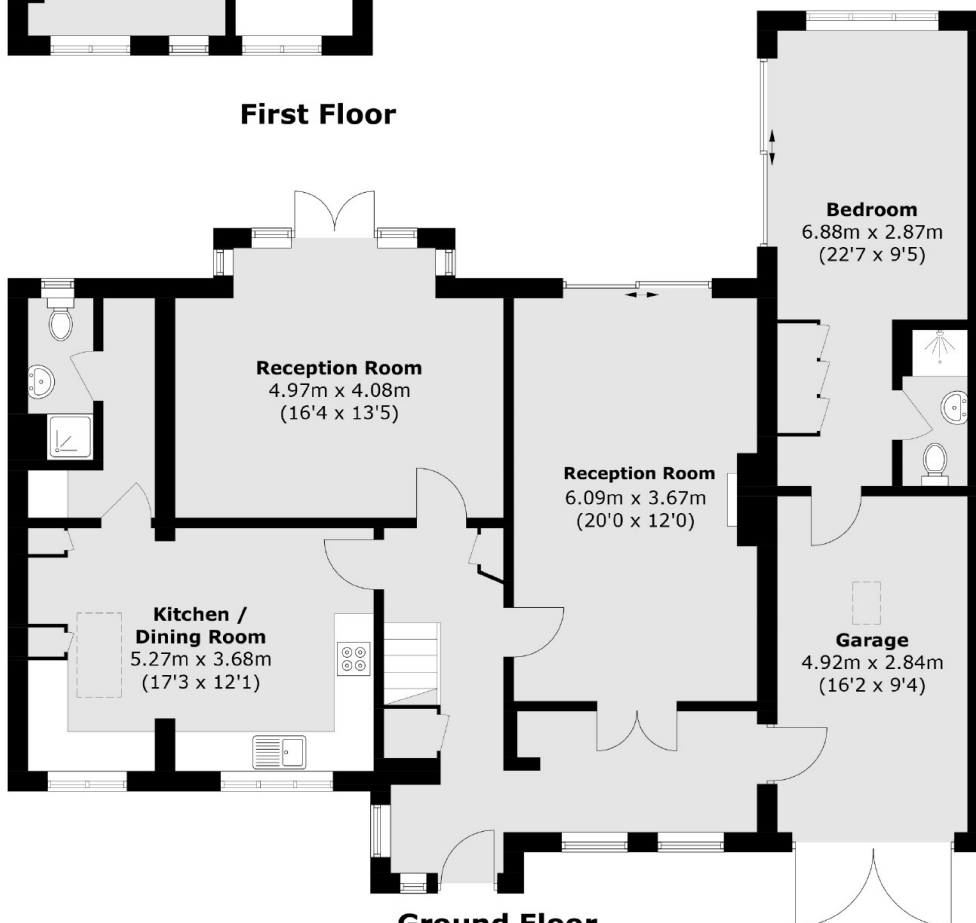
At the front of the property there is an in and out driveway with off street parking for four/five cars and access to the garage. To the rear there is an incredible garden. The large decked area is perfect for entertaining, there is also an expansive lawn and lovely mature borders.



# The Avenue, Sunbury-On-Thames, TW16



**First Floor**



**Ground Floor**

Total area (approx.): 184.4 sq. m (1984.8 sq. ft)  
(Including Garage)