



## Belgrave Crescent, TW16

£492,500

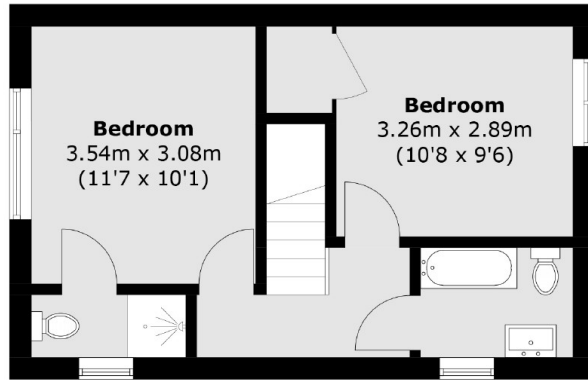
A smartly presented two double bedroom, end of terrace house on a large corner plot with potential to extend (STPP) and a detached garage. The property has undergone a full internal refurbishment, there is also the added bonus of no forward chain.

Belgrave Crescent is a quiet residential cul de sac located off Belgrave Road. Both Kempton Park and Sunbury Stations are less than half a mile away and provide a direct service into London Waterloo.

### Features

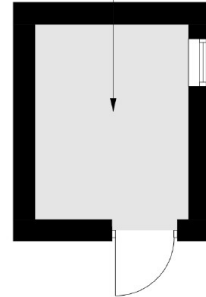
- End Of Terrace
- Two Bedrooms
- Smartly Presented
- Large Corner Plot
- Potential to Extend (STPP)
- No Forward Chain

# Belgrave Crescent, Sunbury-On-Thames, TW16

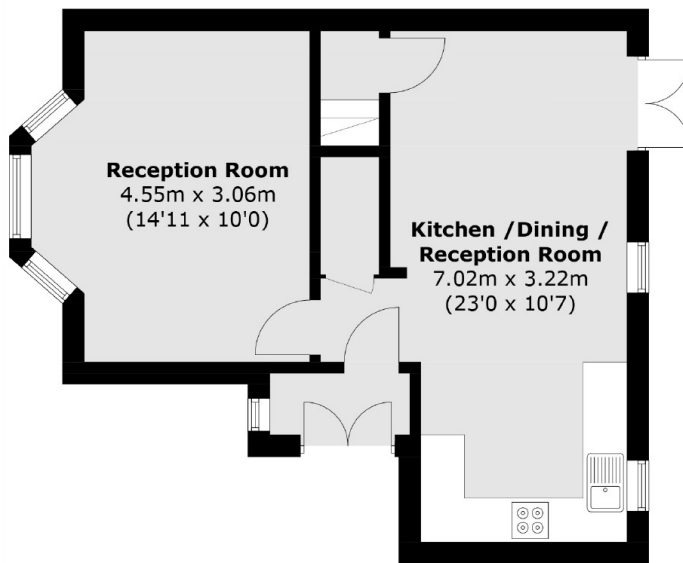


**First Floor**

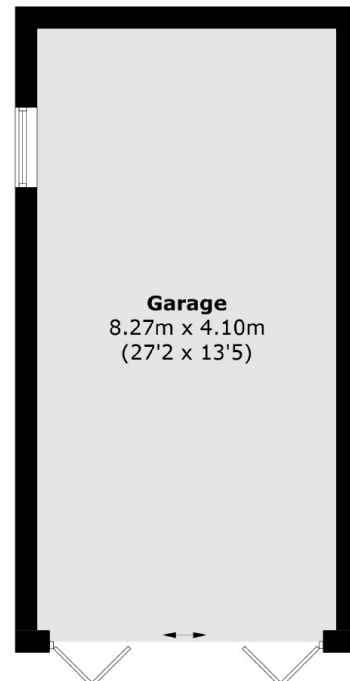
**Outbuilding**  
2.68m x 2.10m  
(8'10 x 6'11)



(Not Shown In Actual  
Location / Orientation)



**Ground Floor**



(Not Shown In Actual  
Location / Orientation)

Total area (approx.): 81.8 sq. m (878.3 sq. ft)  
Outbuilding & Garage (approx.): 40.3 sq. m (433.7 sq. ft)