



Woodthorpe Road, TW15

£625,000

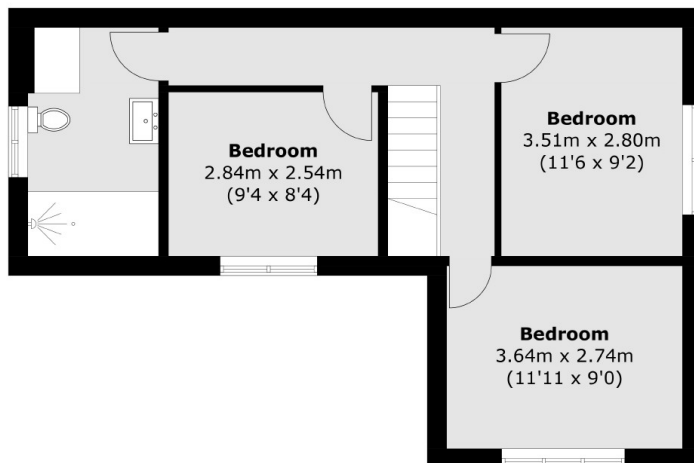
Nestled in a sought-after location is this fantastic three-bedroom semi-detached house on a large corner plot which has loads of potential to add and extend (STPP) Early viewings are highly recommended to avoid disappointment

Woodthorpe Road is located just over half a mile from Ashford Station (0.6) with easy access to the M3 Motorway, A316 and Heathrow Airport less than 5 miles away (4.1)

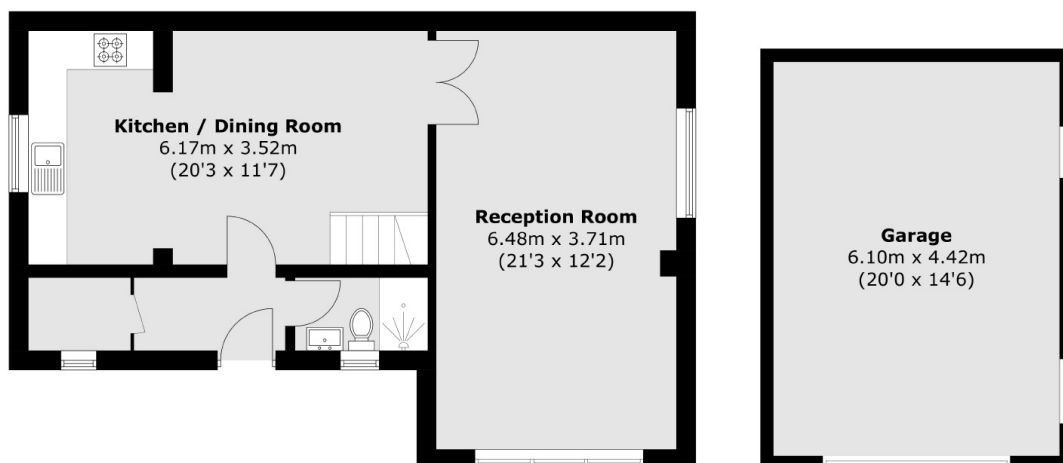
Features

- Corner Plot
- Three Bedrooms
- Two Bathrooms
- Large Gated Driveway
- Garage
- Garden with Playground

Woodthorpe Road, Ashford, TW15



First Floor



Ground Floor

**(Not Shown In Actual
Location / Orientation)**

Total area (approx.): 102.0 sq. m (1,097.9 sq. ft)
Garage area (approx.): 27.0 sq. m (290.6 sq. ft)