



Ivy Close, TW16

£800,000

A spacious four bedroom detached house with a walled rear garden, off-street parking and a garage. The property offers over 1750 sq ft of flexible accommodation and is the perfect home for an upsizing family.

Ivy Close is an amazing location, this quiet residential cul de sac is located off French Street. Everything Sunbury Village has to offer is close by including Rivermead Island and the River Thames, the local shops and Sunbury Park.

Features

- Detached
- Four Bedrooms
- Two Bathrooms
- Downstairs W.C.
- Garage
- Off-Street Parking



Ivy Close, TW16

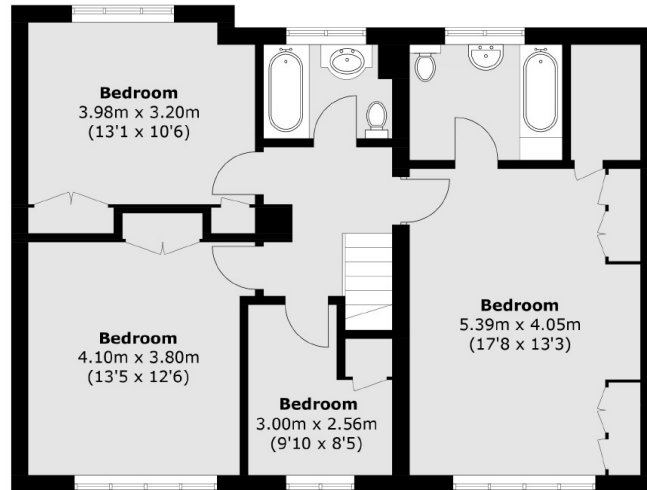
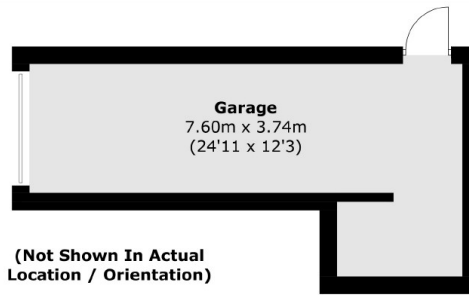
On the ground floor there is a welcoming entrance hallway with a cloakroom, a generous dual aspect reception room opening out on to the rear garden, an eat in kitchen and a separate dining room.

On the first floor there is a large main bedroom with built in storage and an en suite bathroom, two additional double bedrooms both with built in storage, a fourth bedroom that could be used as a study and a family bathroom.

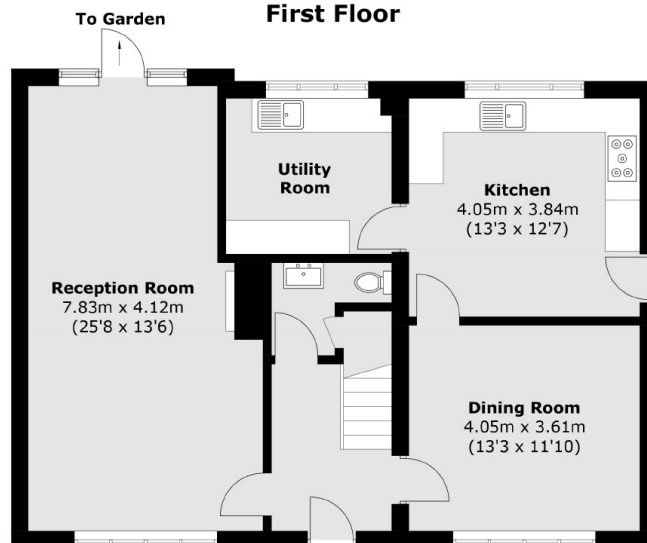
At the front of the property there is a lawn, access to the garage and off street a parking. To the rear there is a charming walled garden with a patio area and lawn.



Ivy Close, Sunbury-On-Thames, TW16



First Floor



Ground Floor

Total area (approx.): 165.4 sq. m (1,780.3 sq. ft)
Garage: 20.6 sq. m (221.7 sq. ft)