



The Vale, TW16

£465,000

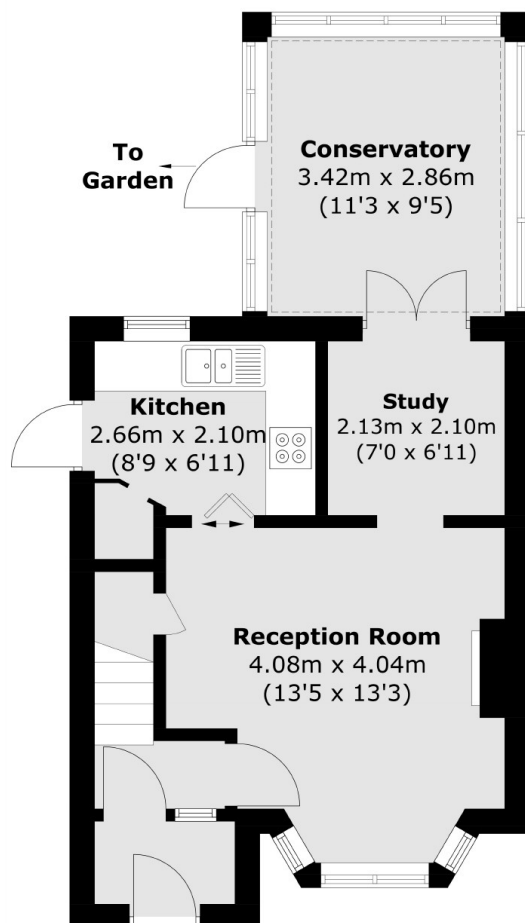
A two bedroom end of terrace house with a conservatory, off street parking and a large rear garden. The property has potential to be extended subject to planning permission.

The Vale is a great location, this quiet cul de sac is located off Ashridge Way. Sunbury station and the shops at Sunbury Cross are just over half a mile away.

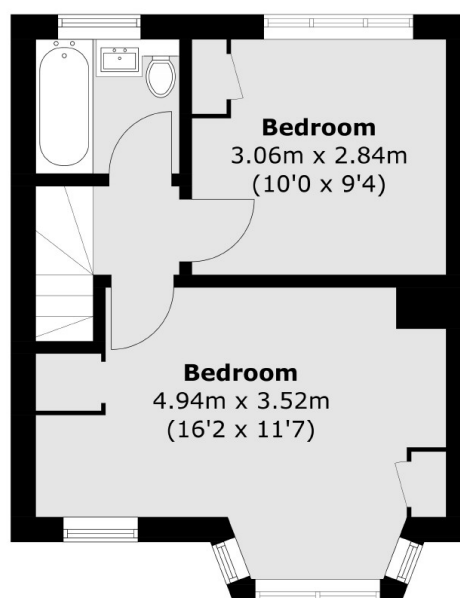
Features

End Of Terrace
Two Bedrooms
Conservatory
Off Street Parking
Large Rear Garden
Potential to Extend (STPP)

The Vale, Sunbury-On-Thames, TW16



Ground Floor



First Floor

Total area (approx.): 71.7 sq. m (771.7 sq. ft)