



Dyas Road, TW16

£430,000

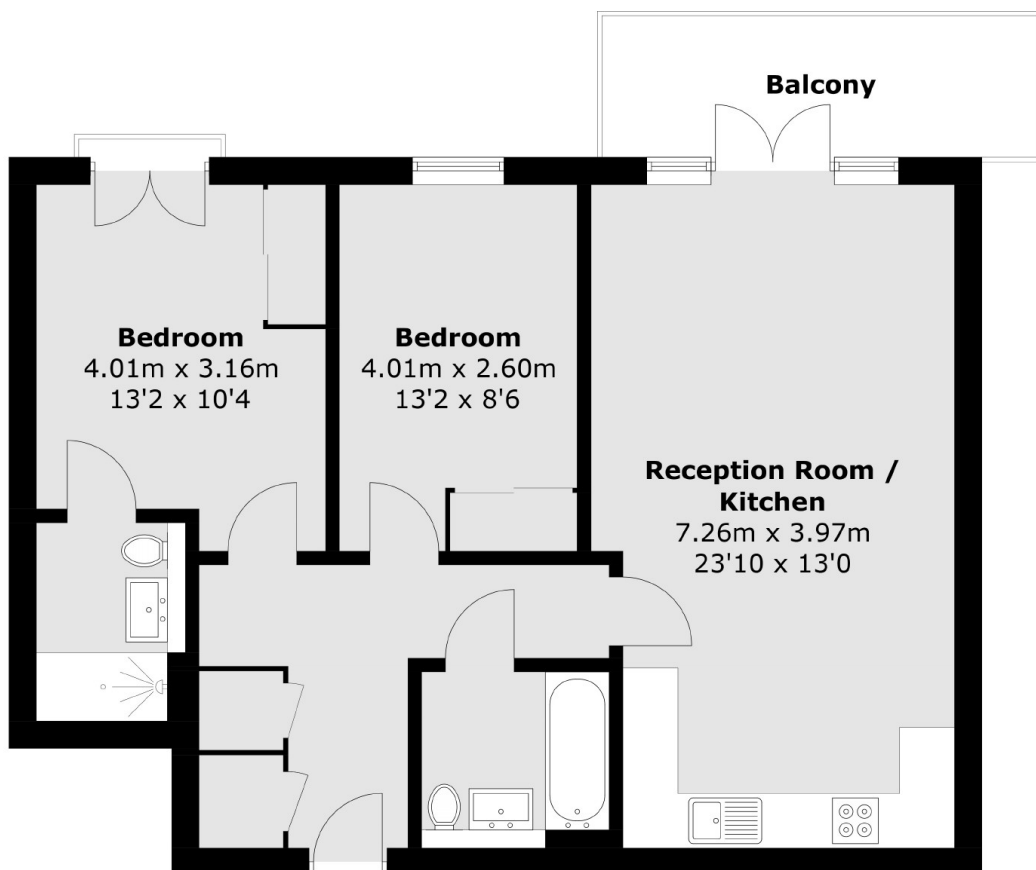
A smartly presented two bedroom, two bathroom second floor apartment with a private balcony and an allocated underground parking space. This modern property was built Crest Nicholson in 2016 and is ideally for a first time buyer or someone looking to downsize.

Dyas Road is a modern development located in the heart of Lower Sunbury. Sunbury Station, Sunbury Park and the River Thames, and several local schools are all within half a mile, with Nuffield Health Club right on your doorstep.

Features

- Second Floor
- Two Bedrooms
- Balcony
- Allocated Parking
- Communal Gardens
- Lift

Dyas Road, Sunbury-On-Thames, TW16



Second Floor

Total area (approx.): 70.9 sq. m (763.2 sq. ft)
Balcony area (approx.): 7.4 sq. m (79.6 sq. ft)