



## Broomfield, TW16

£750,000

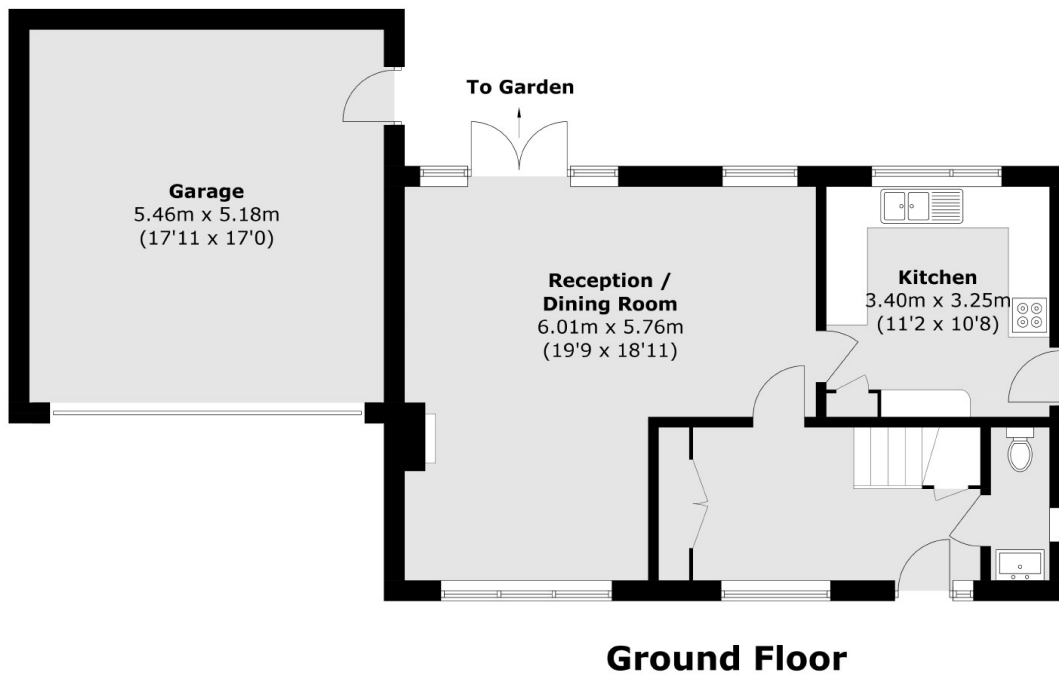
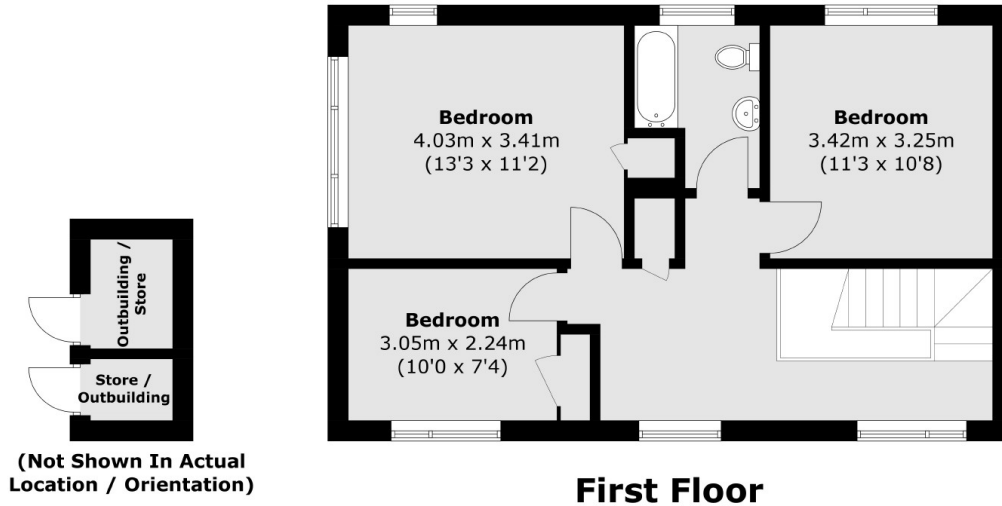
A spacious three bedroom detached house with off street parking and a garage. The property is filled with potential and is being sold with the added bonus of no forward chain.

Located on a quiet no through road within the Benwell Meadow development, the location is great, Sunbury Station which provides a direct service into London Waterloo is approximately 200m away and all the other local amenities are close by including Sunbury Park, the famous 'Walled Garden' and the River Thames.

### Features

- Detached
- Three Bedrooms
- Garage
- Downstairs Cloakroom
- Off Street Parking
- No Forward Chain

# Broomfield, Sunbury-On-Thames, TW16



Total area (approx.): 109.1 sq. m (1,174.3 sq. ft)  
Garage / Outbuilding (approx.): 31.8 sq. m (342.3 sq. ft)