



## Fairwater Drive, TW17

£495,000

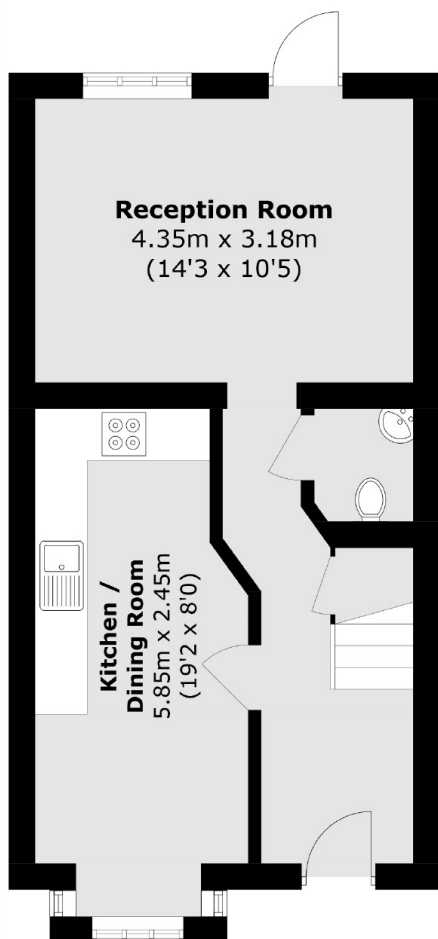
A smartly presented two bedroom two bathroom home with allocated parking and a landscaped rear garden. This modern property has a light and spacious feel and is being sold with the added bonus of being chain free.

Fairwater Drive is an ideal location and everything that Shepperton has to offer is close by, including the high street and Shepperton station which provides a direct service into Waterloo.

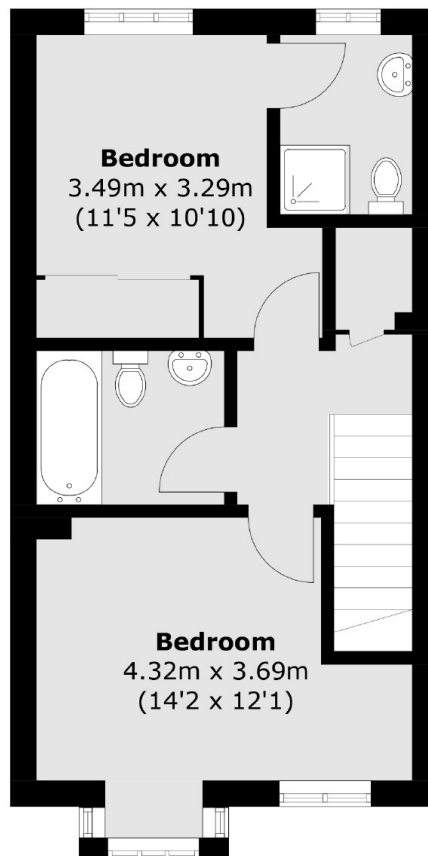
### Features

- Two Bedrooms
- Two Bathrooms
- Downstairs Cloakroom
- Allocated Parking
- Landscaped Rear Garden
- Chain Free

# Fairwater Drive, Shepperton, TW17



**Ground Floor**



**First Floor**

Total area (approx.): 77.2 sq. m ( 831.0 sq. ft)