



Staines Road West, TW16

£475,000

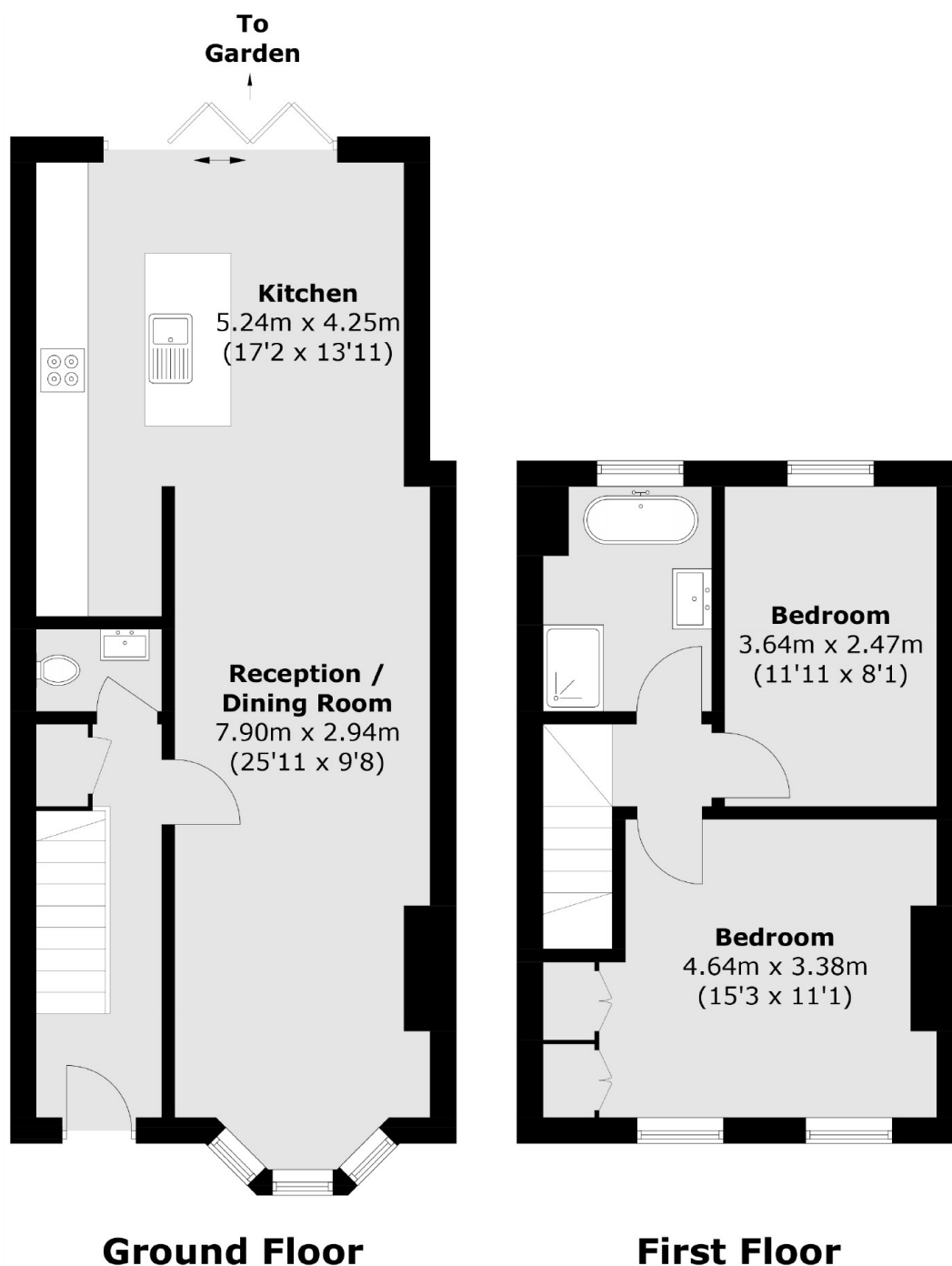
A stunning, extended two bedroom Victorian house with a open plan layout and a landscaped rear garden. This incredible property is immaculately presented throughout and perfect for a family looking for a home they can move straight in to.

Located on the Staines Road West the house is well located for the local transport links. Sunbury Station which provides a direct service into London Waterloo is just over a quarter of a mile away.

Features

- Victorian
- Two Bedrooms
- Extended Ground Floor
- Downstairs Cloakroom
- Landscaped Rear Garden
- Excellent Condition

Staines Road West, Sunbury-On-Thames, TW16



Total area (approx.): 83.7 sq. m (901.0 sq. ft)